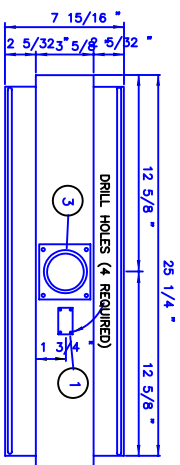
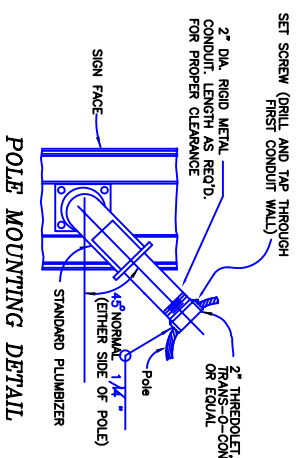


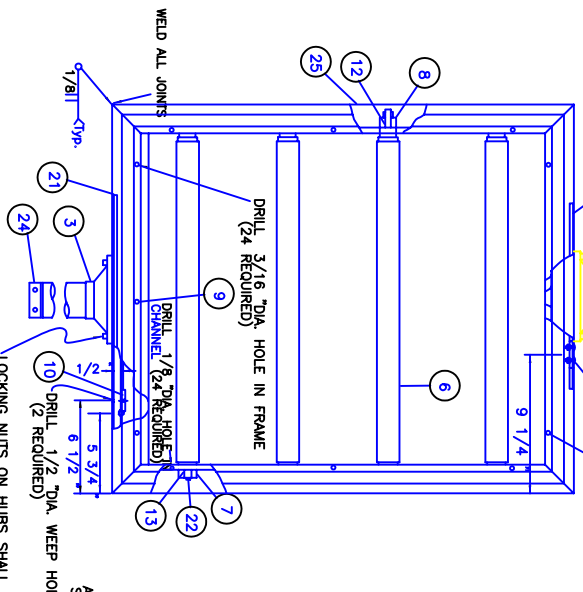
NOTE:
DRAWING NOT TO SCALE
ALL EXCEPTS, BOLTS, NUTS, AND WASHERS SHALL BE GALV. STEEL UNLESS NOTED OTHERWISE. ALL SCREWS SHALL BE MIN. DIA. 1/8" STAINLESS STEEL WITH SQUARE OR HEX HEADS. ALL SPANNING HANGERS AND PLUMBERZERS SHALL BE CAST BRONZE.



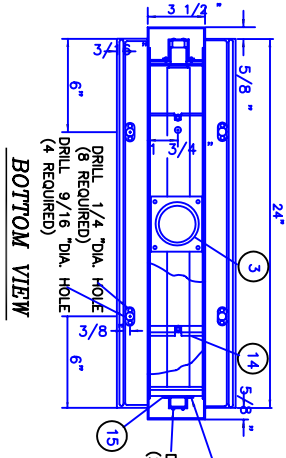
TOP VIEW



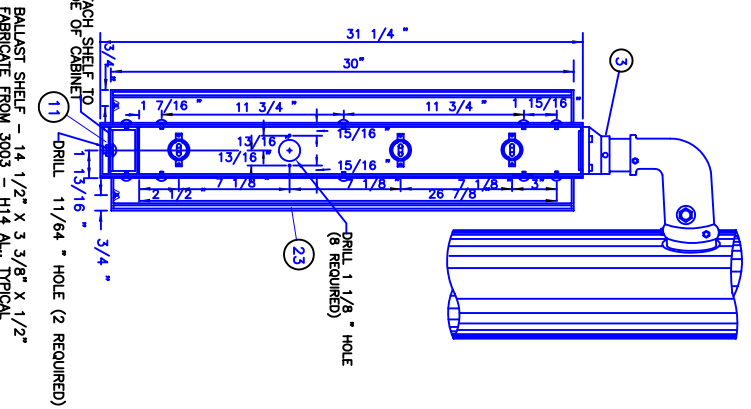
POLE MOUNTING DETAIL



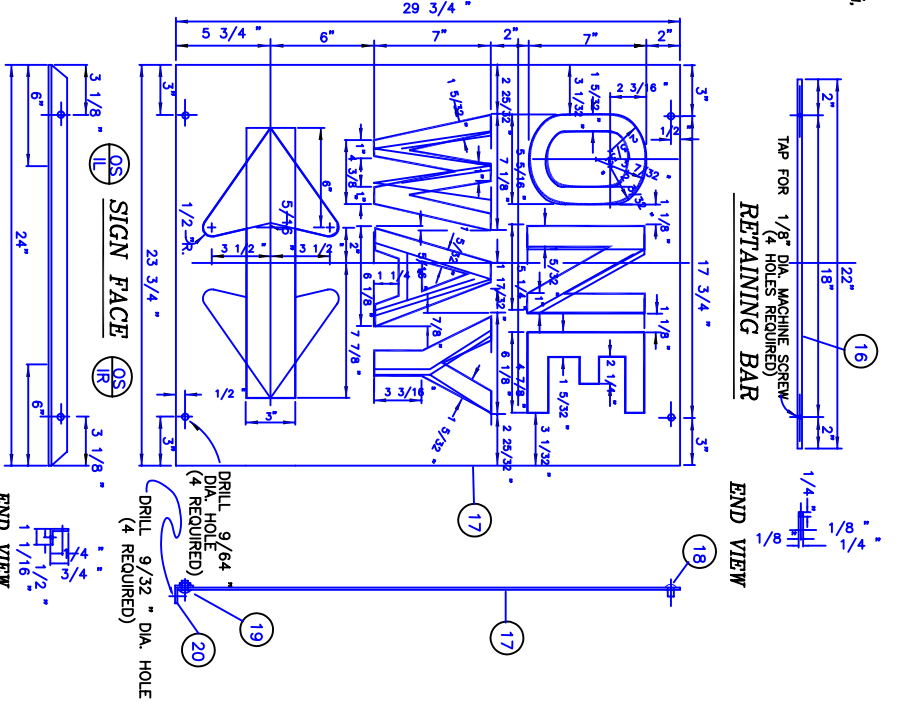
FRONT VIEW



BOTTOM VIEW

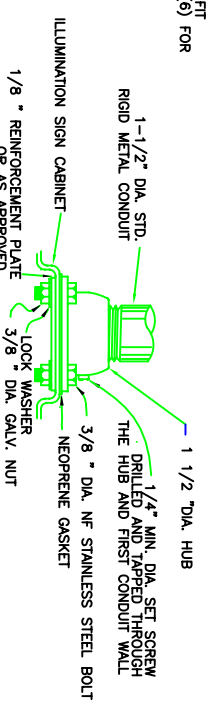


CABINET END ELEVATION

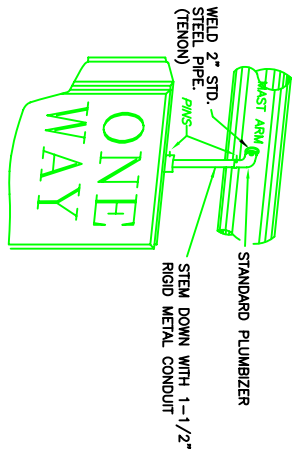


RETAINING ANGLE

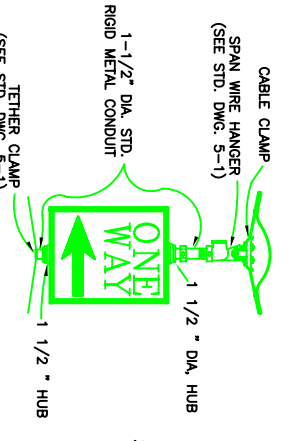
NOTE:
SIGN MESSAGE TO BE AS SHOWN ON THE PLANS OR AS SPECIFIED IN THE SPECIAL PROVISIONS INTERNAL W/ING OF SIGN TO BE PROVIDED TO TERMINAL BLOCK.



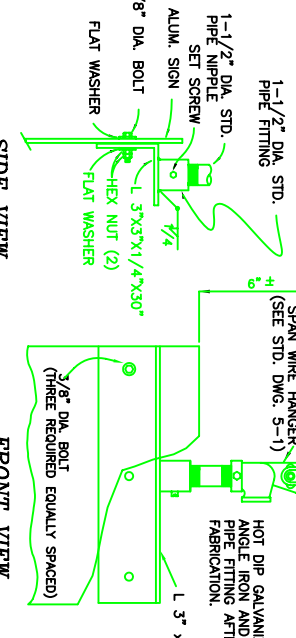
END SECTION AT CABINET MOUNTING DETAIL



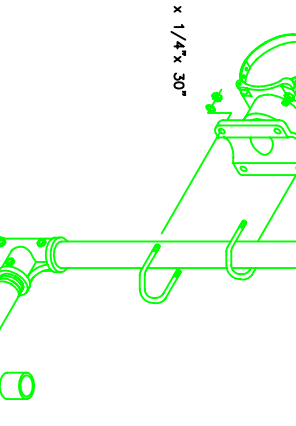
STANDARD PLUMBERZER SIGN MOUNTING DETAIL



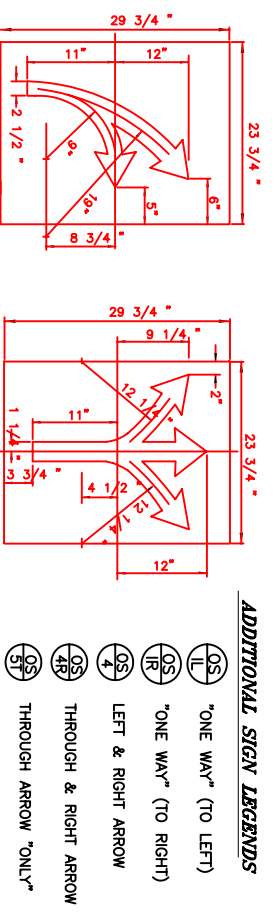
SPAN WIRE SIGN MOUNTING DETAIL



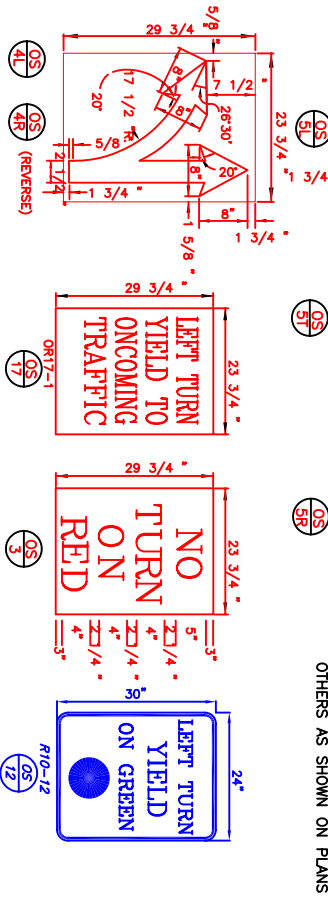
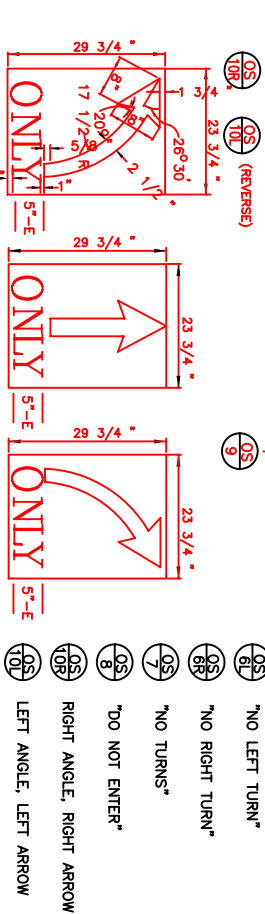
ALUMINUM SIGN MOUNTING DETAIL



ADJUSTABLE SIGN BRACKET



ADDITIONAL SIGN LEGENDS

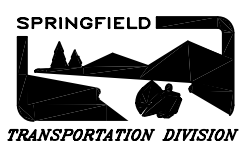


NOTE: MINIMUM 17" LONG FLANGED HUB WITH (8) 1/4" DIA. BOLTS. MAY BE SUBSTITUTED FOR THE REINFORCEMENT PLATE AND STANDARD 1-1/2" DIA. HUB INSTALLATION IF EITHER THE REINFORCEMENT PLATE OR FLANGED HUB IS REQUIRED BOTH TOP AND BOTTOM OF CABINET FOR SPAN WIRE INSTALLATIONS.

NOTE: THIS DRAWING IS INTENDED TO INDICATE GENERAL DESIGN ONLY IN SO FAR AS EQUIPMENT IS CONCERNED. IT IS NOT TO BE CONSTRUED AS BEING AN EXACT REPRESENTATION INASMUCH AS DETAILS OF DESIGN WILL VARY AMONG DIFFERENT MANUFACTURERS. DO NOT SCALE DRAWING.

No.	DESCRIPTION
1	CIRCUIT - 120 VOLT TERMINAL BLOCK (INSIDE CABINET)
2	3" COTTER KEY
3	1 1/2" DIA. HUB
4	1/8" DIA. X 1/2" MACHINE SCREW WITH NUT
5	3/16" DIA. X 9/16" HARDENED SHEET METAL SCREW
6	STANDARD F24T12/CW SINGLE PIN SLIM LINE FLUORESCENT TUBE
7	KULIKA LINE-DISCONNECTING SOCKETS
8	KULIKA SPRING LOADED SOCKETS
9	1/8" DIA. X 3/8" HARDENED SHEET METAL SCREW
10	HEAVY-DUTY 1/4" TURN CAPTIVE FASTENER
11	5/32" DIA. X 1/2" MACHINE SCREW WITH LOCK WASHERS AND NUT
12	1 1/4" SOCKET HOLDING BRACKET
13	9/16" SOCKET HOLDING BRACKET
14	STANDARD JEFFERSON BALLAST (OR APPROVED EQUAL)
15	1/8" DIA. X 1/4" MACHINE SCREW
16	1/4" X 1/4" EXTRUDED ALUMINUM ALLOY 6063-T5
17	1/8" DIA. X 1/4" ALUMINUM MACHINE SCREW
18	1/8" DIA. X 1/4" ALUMINUM MACHINE SCREW
19	SIZE 6-32 ALUMINUM ALLOY 2024-T3 DUAL HEAD MACHINE SCREW AND NUT
20	REINFORCEMENT PLATE (1/8" MIN. THICK)
21	REINFORCEMENT PLATE (1/8" MIN. THICK)
22	1/8" DIA. X 5/16" ALUMINUM MACHINE SCREW
23	3003-H14 ALUMINUM ALLOY .060" THICKNESS TYPICAL (BLANK PANE)
24	TETHER CLAMP (FOR TETHERED SPANS-SEE DRAWG. TS-103)
25	6063-T5 EXTRUDED ALUMINUM ALLOY CASE FRAME, .078 THICKNESS TYPICAL

CITY OF SPRINGFIELD
DEPT. OF PUBLIC WORKS
TRANSPORTATION DIVISION
225 FIFTH STREET
SPRINGFIELD, OR. 97477
(541) 726-3753



SIGN DETAILS

STANDARD DRAWING 5-9

NO	REVISION	DATE	BY	APPR.
1	FORMERLY TS-105	6/91		
2	ADJUSTABLE BRACKET	4/91		
3	STD. DWG. 5-9	4/94	DB	
4	STD. DWG. UPDATE	5/01	D.B.	B.B.

DRAWN: DRB
DESIGNED: DRB
CHECKED:
APPROVED:
FILENAME: TS05_9