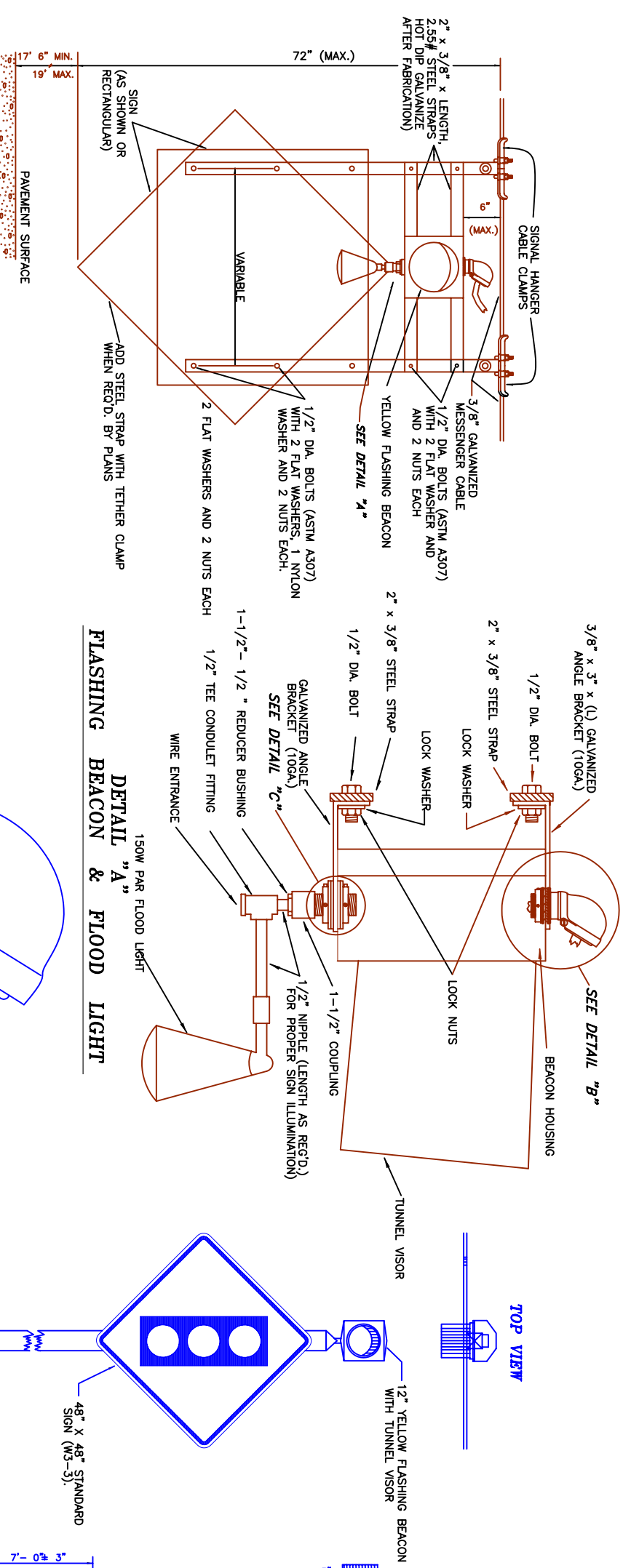
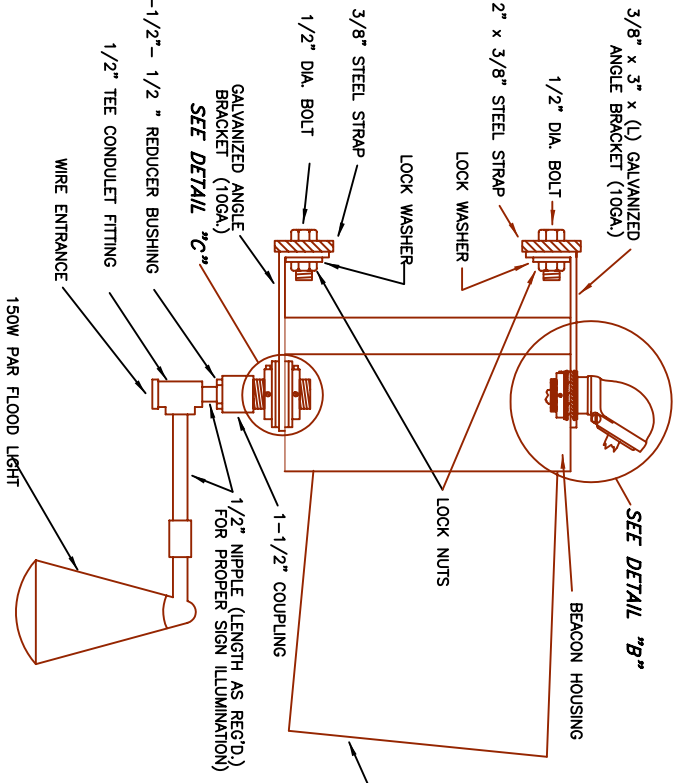


NOTE: DRAWING NOT TO SCALE. ALL EYEBOLTS, BOLTS, NUTS, AND WASHERS SHALL BE GALV. STEEL UNLESS NOTED OTHERWISE. ALL SET SCREWS SHALL BE MIN. DIA. 1/4" STAINLESS STEEL WITH SQUARE OR HEX HEADS. ALL SPANWIRE HANGERS AND PLUMBERIZERS SHALL BE CAST BRONZE.



**SPAN MOUNTED WARNING SIGN**

**FLASHING BEACON & FLOOD LIGHT**

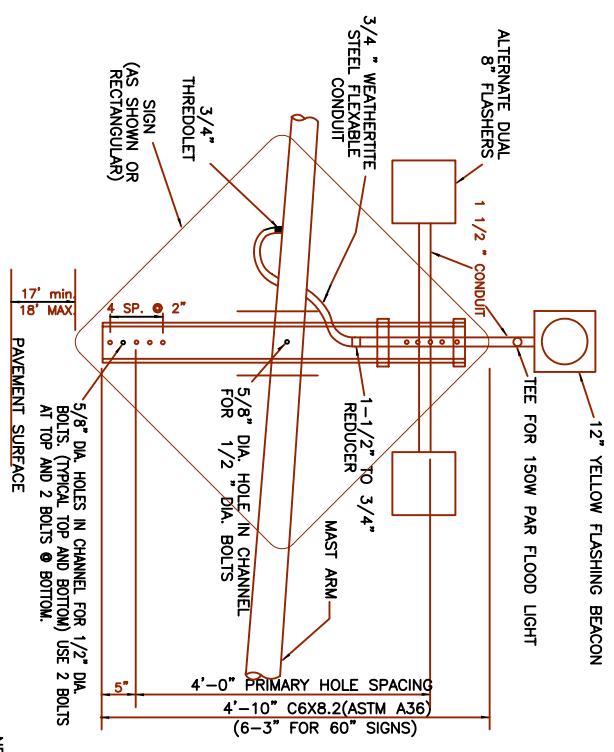


**DETAIL "A"**

**DETAIL "B"**

**DETAIL "C"**

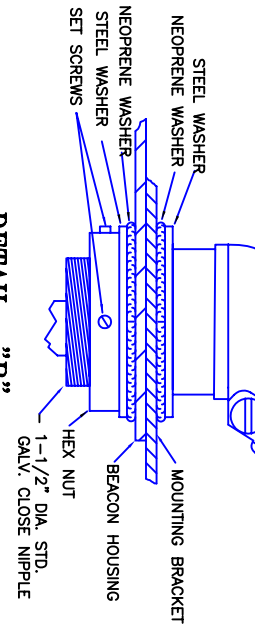
**SPAN MOUNTED WARNING SIGN**



**SPAN MOUNTED WARNING SIGN**

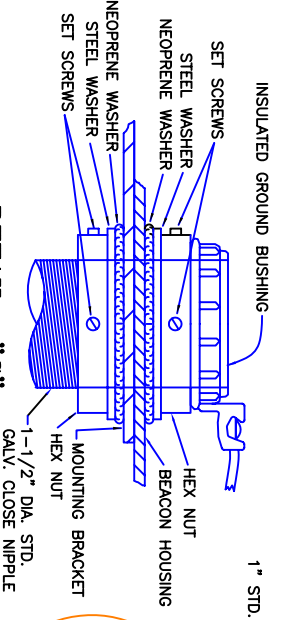
NOTE: ATTACH SIGN TO CHANNEL WITH 5-1/2" DIA. x 2-1/2" GALV. BOLTS (A307). USE 2 FLAT WASHERS AND 2 NUTS EACH BOLT. STRUCTURAL STEEL AND FASTENERS SHALL BE HOT-DIP GALVANIZED AFTER FABRICATION.

**UPPER BRACKET MOUNTING DETAIL**

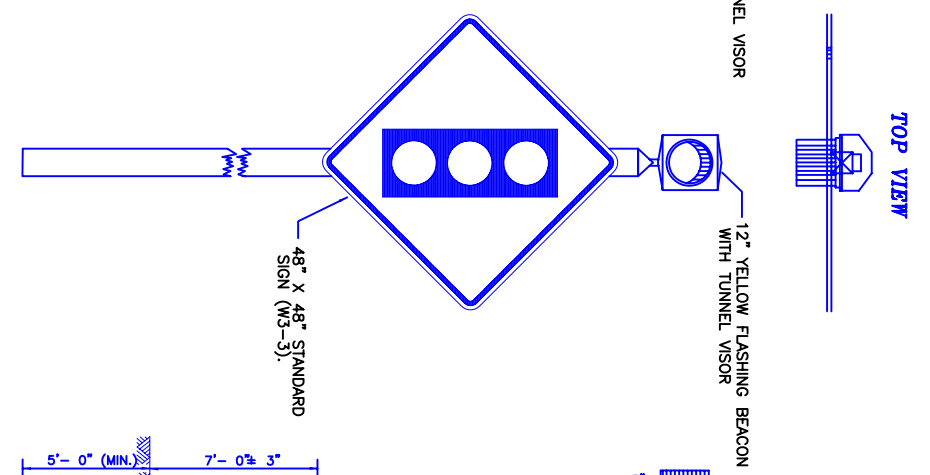


**DETAIL "B"**

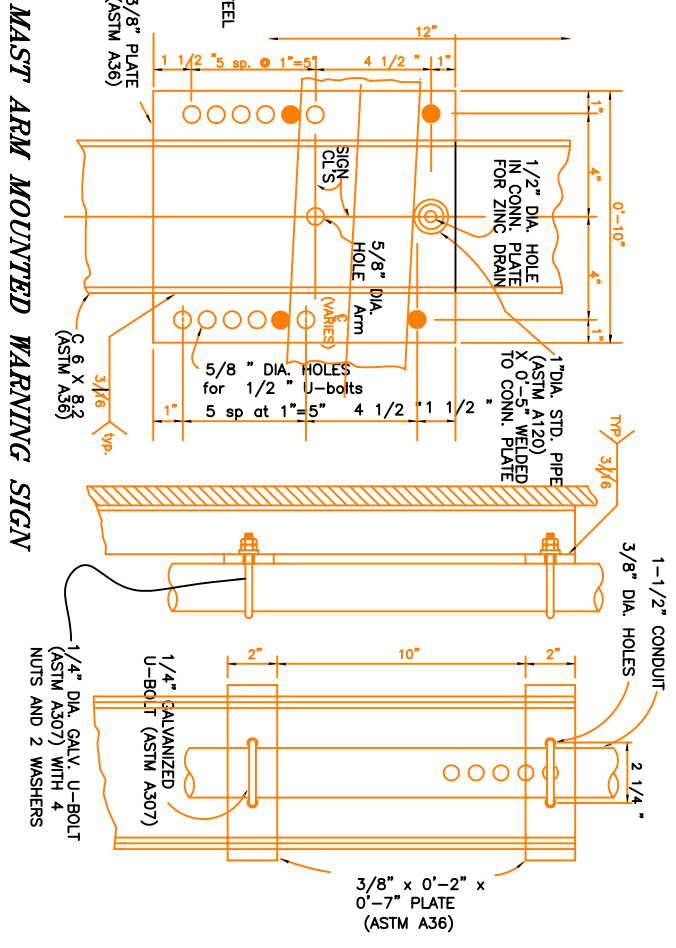
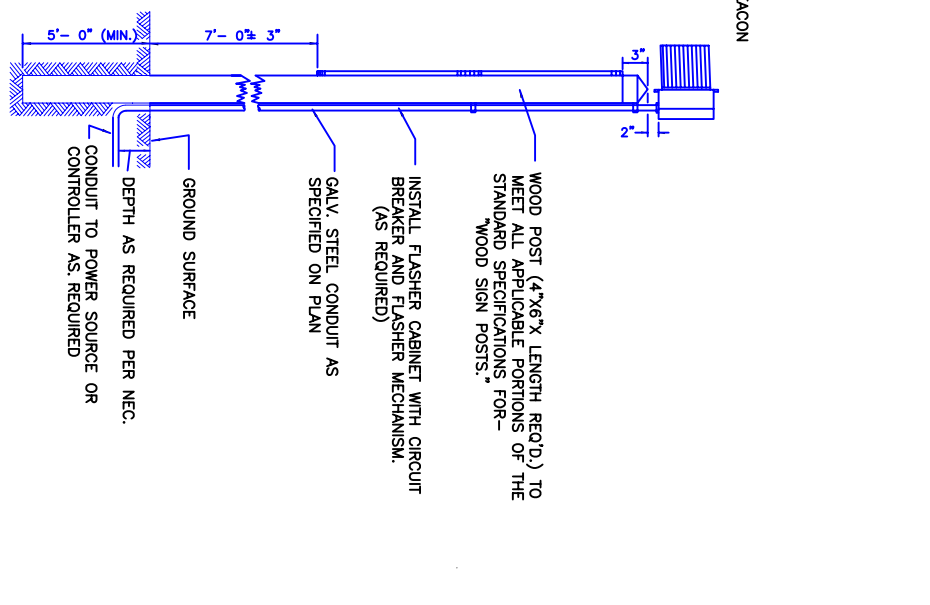
**CONDUIT ENTRANCE**



**DETAIL "C"**



**ADVANCE SIGNAL SIGN**

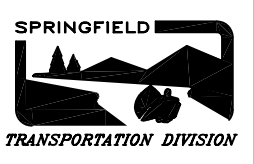


**MAST ARM MOUNTED WARNING SIGN**

CITY OF SPRINGFIELD  
DEPT. OF PUBLIC WORKS  
TRANSPORTATION DIVISION  
225 FIFTH STREET  
SPRINGFIELD, OR. 97477  
(541) 726-3753

NO	REVISION	DATE	BY	APPR.
1	FORMERLY TS-109		J.B.	J.E.
2	STD. DWG 5-7	4/94	D.B.	S.M.
3	DWG. UPDATE	6/01	D.B.	S.M.

BY: J.BRULLE  
DATE: 6/90  
DESIGNED: J.BRULLE  
CHECKED: J.BRULLE  
APPROVED: J.BRULLE  
FILENAME: TS05\_7



ADVANCE  
WARNING  
SIGNS

STANDARD  
DRAWING  
5-7