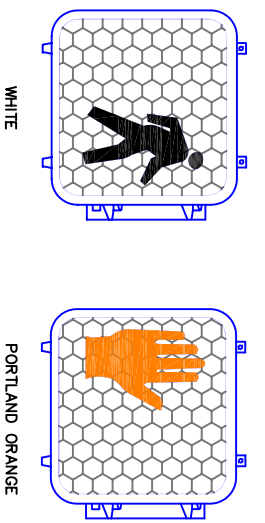
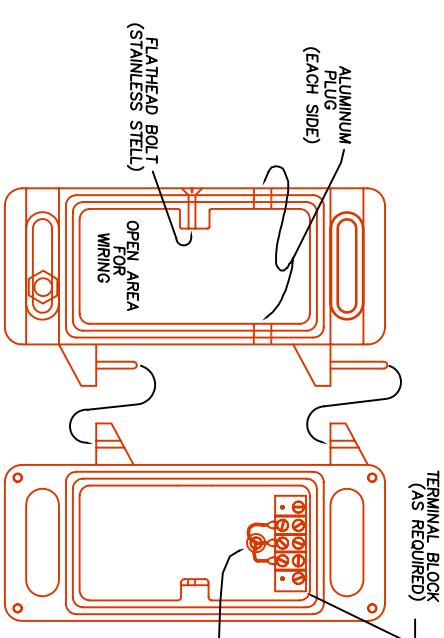
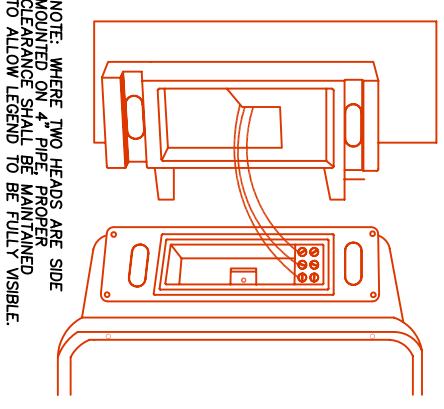


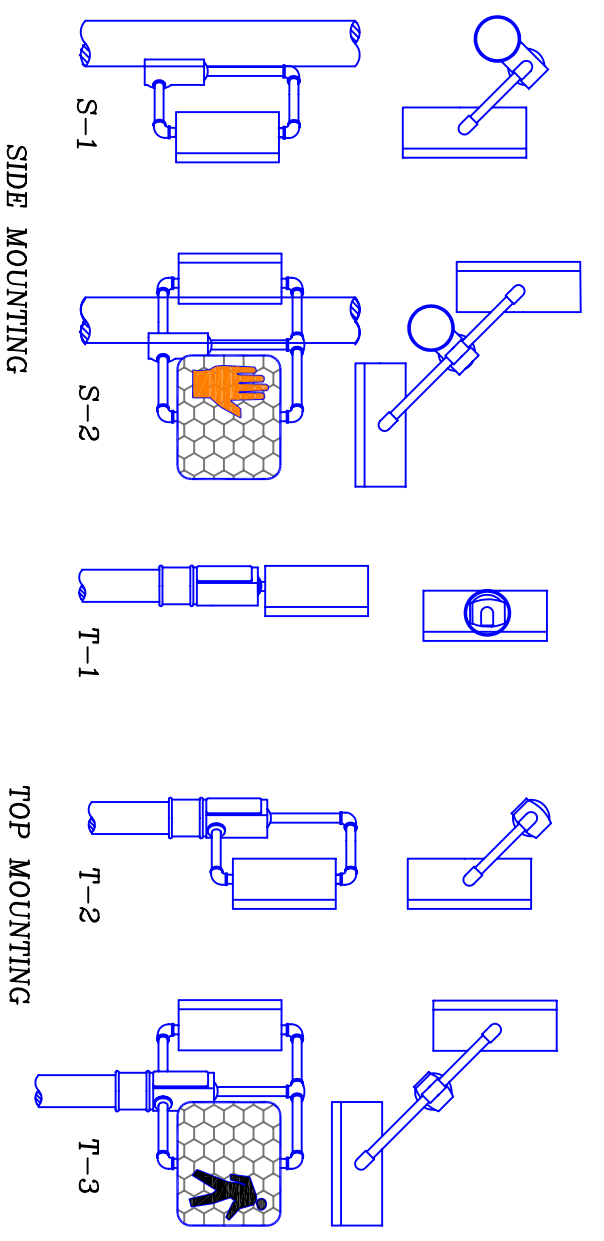
CLAM SHELL ORIENTATION



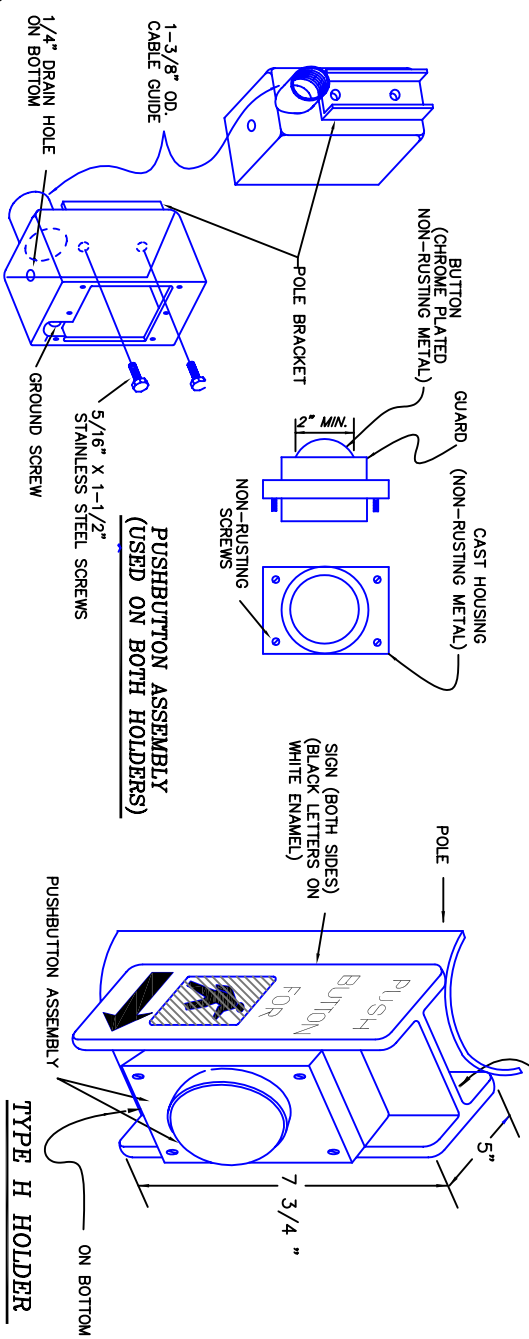
SINGLE SECTION PEDESTRIAN SIGNAL HEAD



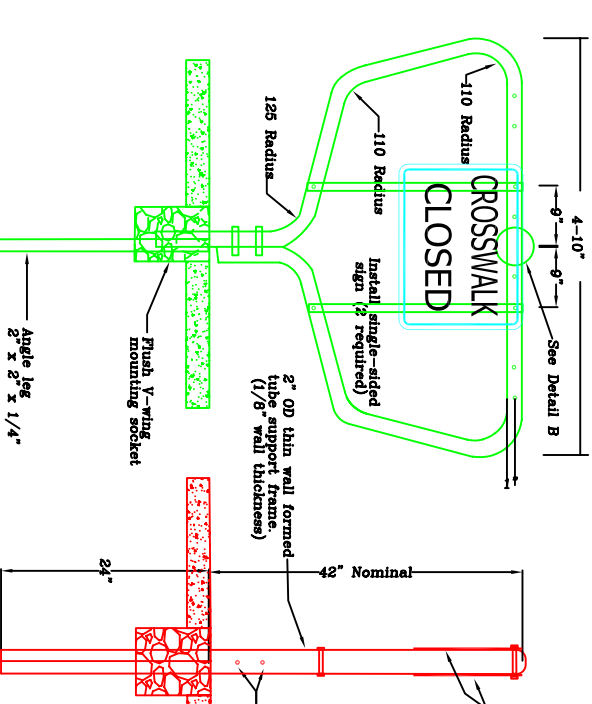
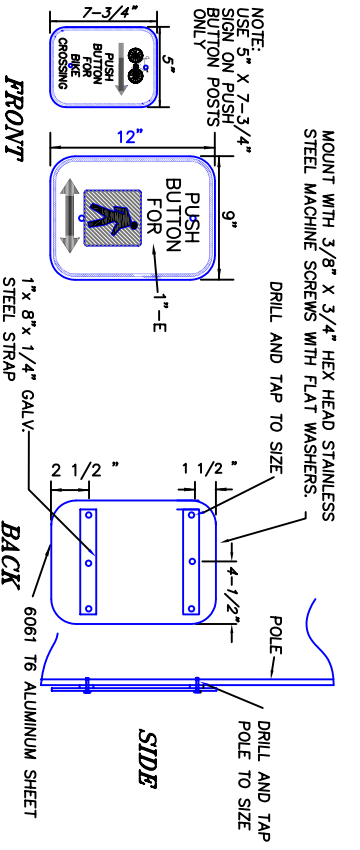
CLAM SHELL PEDESTRIAN SIGNAL MOUNTING



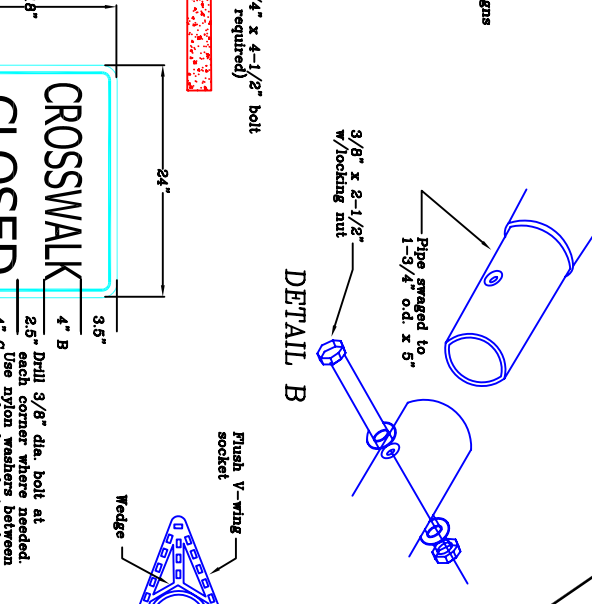
PEDESTRIAN SIGNALS



PEDESTRIAN PUSH BUTTON



CROSSWALK CLOSURE SUPPORT DETAIL



SIGN DETAIL*

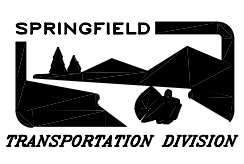
(To be used in raised islands or where buildings and/or insufficient R/W prevent installation of free-standing sign shown below)

- GENERAL NOTES:**
- All holes in the tube support frame are to be predrilled by the manufacturer. (1/16" larger than mounting bolt)
 - Care shall be taken that no concrete is placed within mounting socket.

NOTE: DRAWING NOT TO SCALE
ALL EYEBOLTS, BOLTS, NUTS, AND WASHERS SHALL BE GALV. STEEL UNLESS NOTED OTHERWISE, ALL SET SCREWS SHALL BE MIN. DIA. 1/4" STAINLESS STEEL WITH SQUARE OR HEX HEADS. ALL SPANWIRE HANGERS AND PLUMBIZERS SHALL BE CAST BRONZE.

NO	REVISION	DATE	BY	APPR.
1	FORMERLY TS-103	6/91	J.B.	J.E.
2	SPRINGFIELD DWG. 5-4	3/93	D.B.	S.M.
3	DWG. REVISION	5/01	D.B.	B.F.B.

CITY OF SPRINGFIELD
DEPT. OF PUBLIC WORKS
TRANSPORTATION DIVISION
225 FIFTH STREET
SPRINGFIELD, OR. 97477
(541) 726-3753



PEDESTRIAN SIGNAL AND SIGN DETAILS

STANDARD DRAWING
5-4