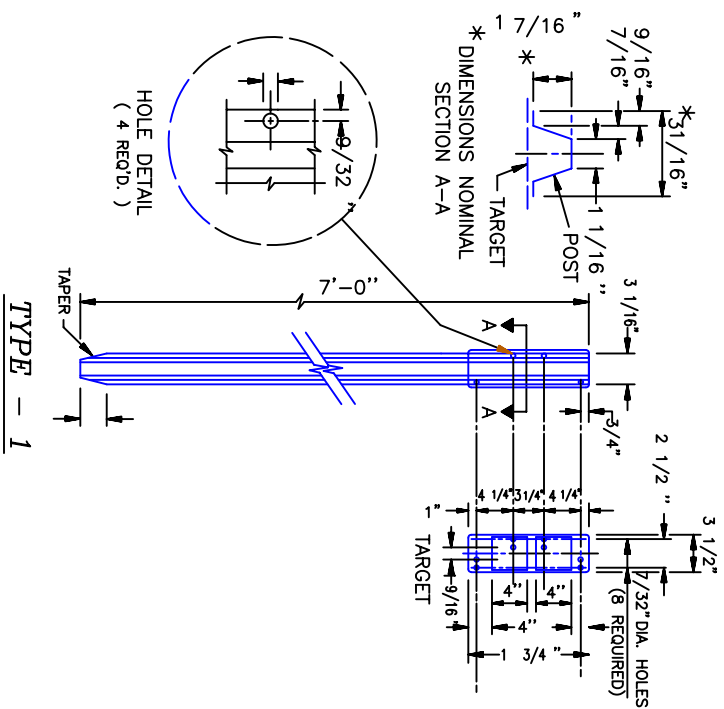
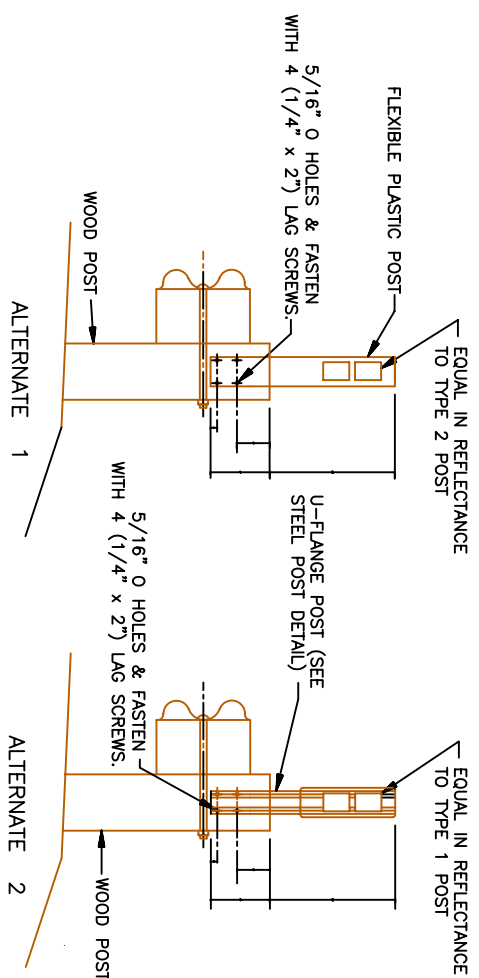
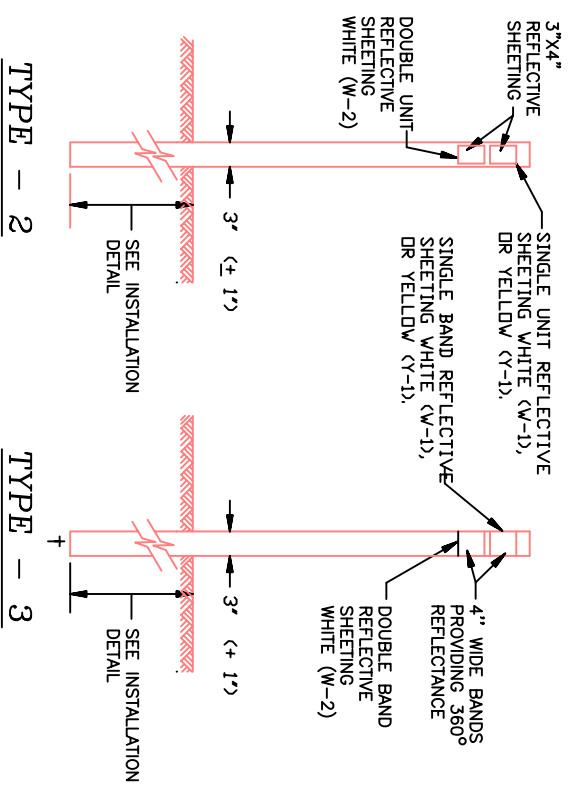


TRAFFIC DELINEATORS

STEEL POSTS



FLEXIBLE PLASTIC POSTS



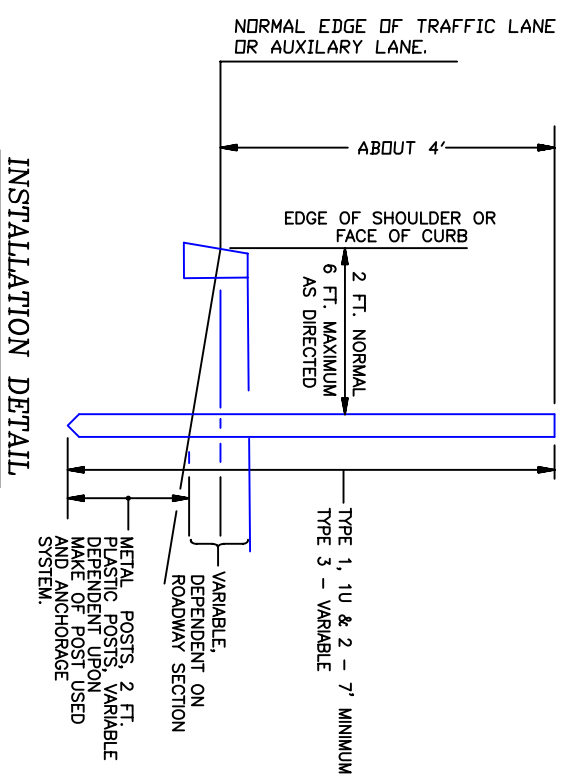
TYPE - 4 (GUARDRAIL AREAS) WITH WOOD POSTS

REFLECTORS		NUMBER OF REFLECTORS
W-1	White	1
W-2	White	2
Y-1	Yellow	1

HORIZONTAL CURVES

DEGREE OF CURVE	SPACING EACH SIDE OF ROADWAY IN FEET	
	IN ADVANCE OF & BEYOND CURVE	FIRST SPACE SECOND SPACE
1	300	400
2	210	380
3	170	310
4	150	270
5	130	230
6	120	200
7-8	100	180
9-10	90	160
11-12	80	140
13-18	70	130
19-25	60	110
26-Up	50	100

- NOTES:**
- POST**
1. GALV. STEEL, NOMINAL WEIGHT TYPE 1,
 2. LB. PER FT., TYPE 1 U, 1.12 LB. PER FT.
- TARGET**
1. ALUMINUM SHEET, NOMINAL THICKNESS 0.090".
 2. FASTEN TO POST WITH 3/16" DIAMETER ALUMINUM BLIND RIVETS AND WASHERS.
- REFLECTORS:**
1. 3" x 4" REFLECTIVE SHEETING.
 2. PLACE REQUIRED NUMBER IN SEQUENCE FROM TOP OF TARGET.
- HOLES**
1. DIMENSIONS ARE MAXIMUM AT TIME OF UNIT ASSEMBLY.
- INSTALLATION**
1. SEE INSTALLATION DETAIL

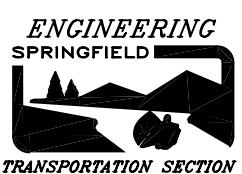


INSTALLATION DETAIL

NOTE: DRAWING NOT TO SCALE
ALL EYE BOLTS, BOLTS, NUTS, AND WASHERS SHALL BE GALV. STEEL, UNLESS NOTED OTHERWISE. ALL SET SCREWS SHALL BE MIN. DIA. 1/4" STAINLESS STEEL WITH SQUARE OR HEX HEADS. ALL SPANWIRE HANGERS AND FLUMBLIZERS SHALL BE CAST BRONZE.

BY	DATE	NO	REVISION	DATE	BY	APPR.
DRAWN: DRB	10/93	1	FORMALLY ODOT #2129	3/94		
DESIGNED:						
CHECKED:						
APPROVED:						
FILENAME: TSS5_25						

CITY OF SPRINGFIELD
DEPT. OF PUBLIC WORKS
TRANSPORTATION SECTION
225 FIFTH STREET
SPRINGFIELD, OR. 97477
(503) 726-3753



GUIDE POSTS DELINEATOR DETAILS

STANDARD
DRAWING

5-25