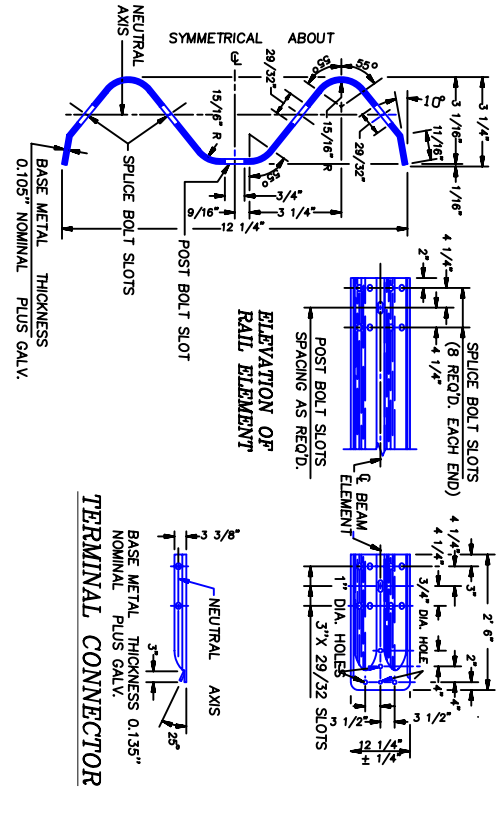


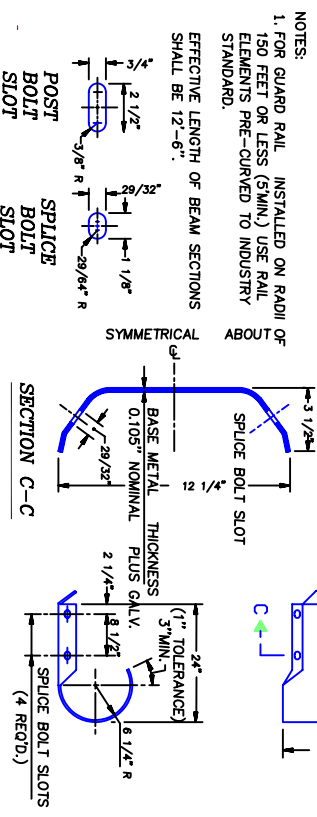
GUARDRAIL BARRIER CLOSURE DEVICE

NOTE: DRAWING NOT TO SCALE
 ALL BOLTS, BOLTS, NUTS, AND WASHERS SHALL BE GALV. STEEL UNLESS NOTED OTHERWISE. ALL SET SCREWS SHALL BE MIN. DIA. 1/4" STAINLESS STEEL WITH SQUARE OR HEX HEADS. ALL SPANWIRE HANGERS AND PLUMBERS SHALL BE CAST BRONZE.

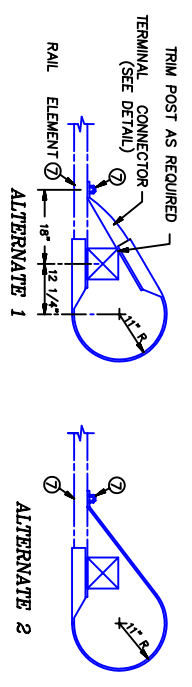
RAIL MEMBERS



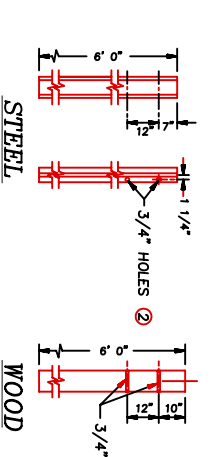
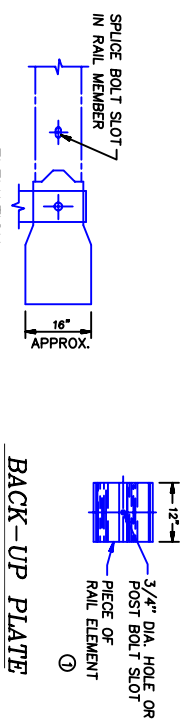
SECTION THRU RAIL ELEMENT



TYPE B END PIECE



BACK-UP PLATE



POSTS

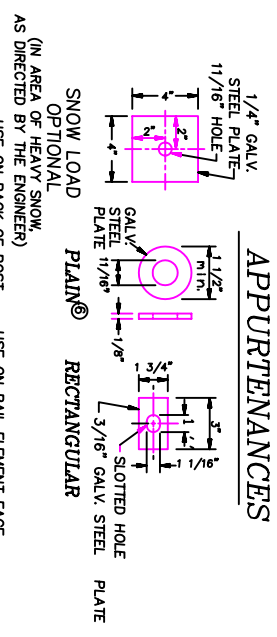
FOR TYPE 11A.2 & 2A GUARDRAIL POSTS MAY BE 6"x9" OR 8"x9".
 FOR TYPE 3 GUARDRAIL MEDIAN BARRIER OR TRANSITION GUARDRAIL, POSTS WILL BE 8"x8" TREATED TIMBER, S4S OR ROUGH SAW.

① WOOD BLOCK, 8"x8" OR 6"x6" TO MATCH POST

② USE ON TYPE 2, 2A, 3 & TRANSITION GUARDRAIL & ON MEDIAN BARRIER ONLY WHERE OPTIONAL RAIL IS TO BE INSTALLED.

③ REPLACES W8 X 8.5, WHICH IS AN ACCEPTABLE ALTERNATE.

APPURTENANCES



SNOW LOAD (IN AREA OF HEAVY SNOW, AS DIRECTED BY THE ENGINEER) USE ON BACK OF POST

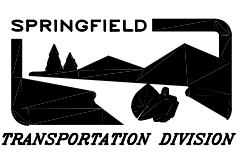
USE ON RAIL ELEMENT FACE ON END POST OF BOLT ONLY

WASHERS

- ④ FURNISHED & INSTALLED BY STRUCTURE CONTRACTOR WHEN SHOWN ON STRUCTURE PLANS
- ⑤ 5 1/2" MIN. PENETRATION INTO CONCRETE SLAB OTHER THAN BRIDGE DECKS, CAST IN PLACE OR CONE AND GROUT WITH EXPANDING GROUT.
- ⑥ NOT REQUIRED IF "SNOW LOAD" WASHER OPTION IS USED.
- ⑦ USE RECTANGULAR WASHER UNDER BOLT HEAD AND NUT ON TYPE C END PIECE AS SHOWN.

L	1-1/4"	THREAD LENGTH
	2"	FULL LENGTH THREAD
	9-1/2"	1 1/2" MIN. THREAD LENGTH
	18"	2" MIN. THREAD LENGTH
	25"	3 1/2" MIN. THREAD LENGTH
	31/32"	3" MIN. THREAD LENGTH

GUARDRAIL BARRICADE AND MISC. PARTS BETAILS



CITY OF SPRINGFIELD
 DEPT. OF PUBLIC WORKS
 TRANSPORTATION DIVISION
 225 FIFTH STREET
 SPRINGFIELD, OR. 97477
 (541) 726-3753

NO	REVISION	DATE	BY	APPR.
1	STD. DWG 5-19	4/94	DRB	
2	STD. DWG UPDATE	7/01	D.D.	B.B.

DRAWN: DRB
 DESIGNED: DRB
 CHECKED:
 APPROVED:
 FILENAME: TSD5_19