

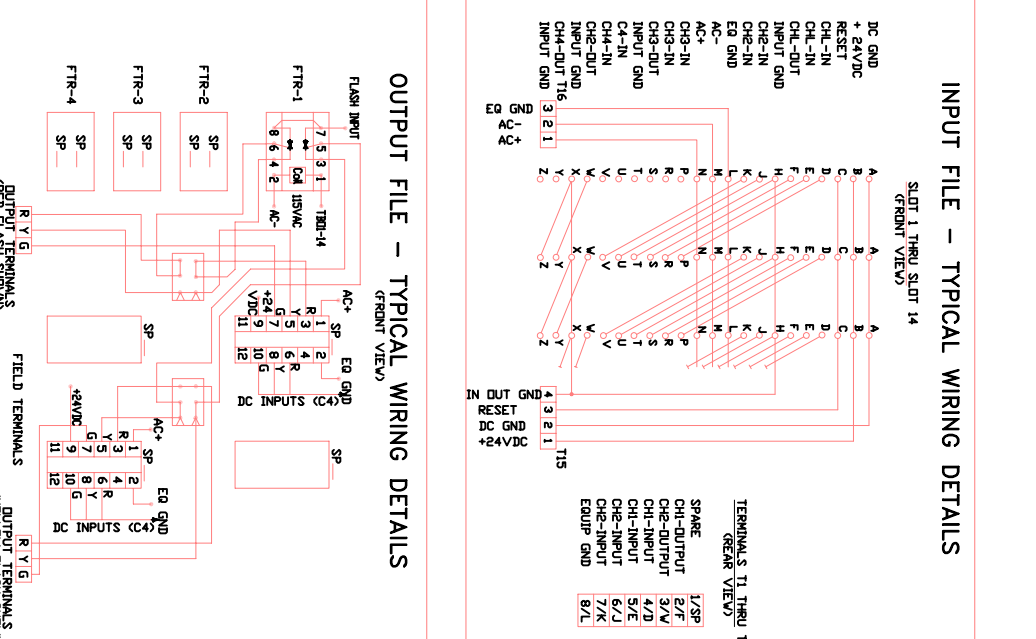
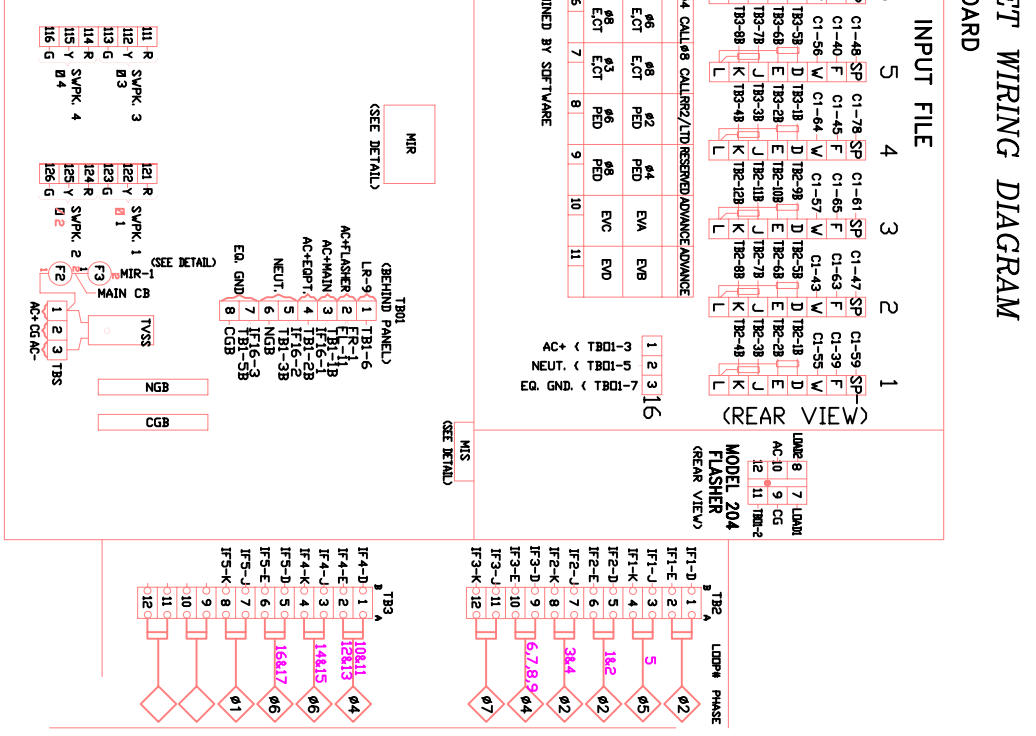
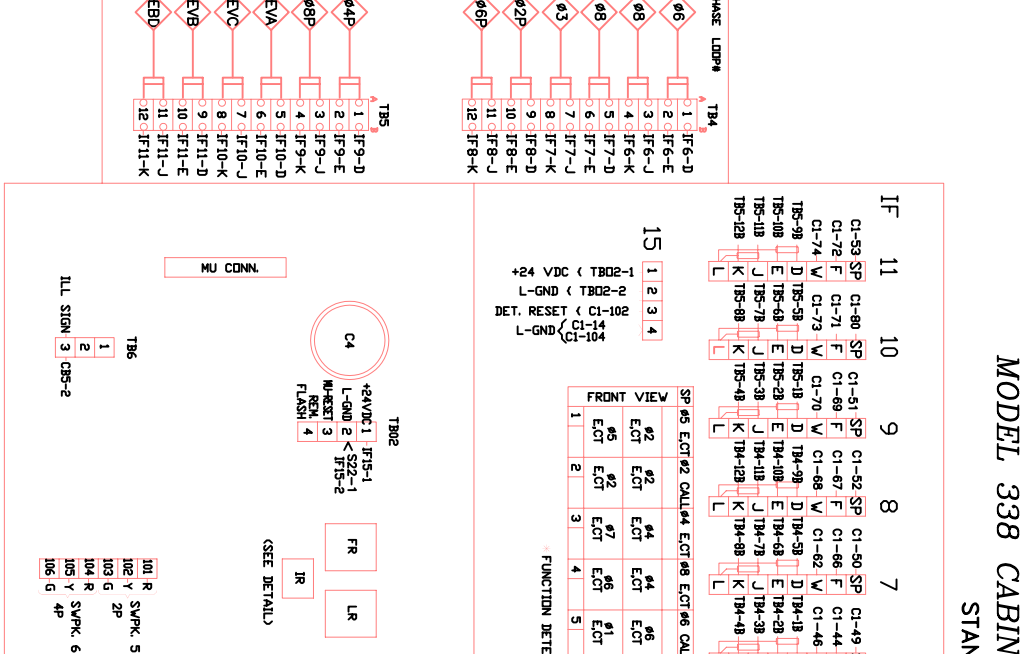
# MODEL 338 CABINET WIRING DIAGRAM

## STANDARD

### CABLE C1

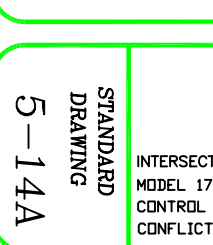
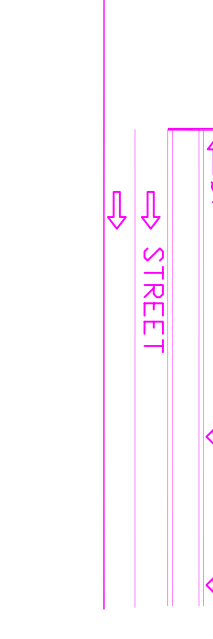
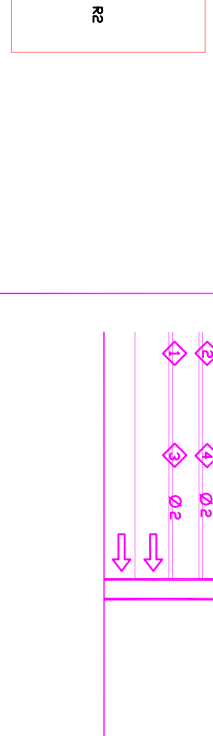
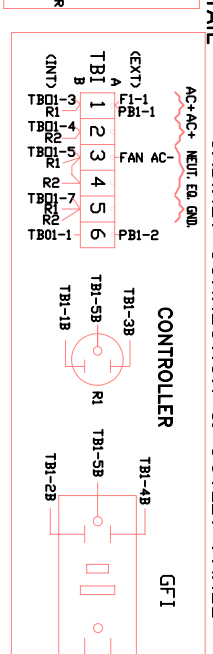
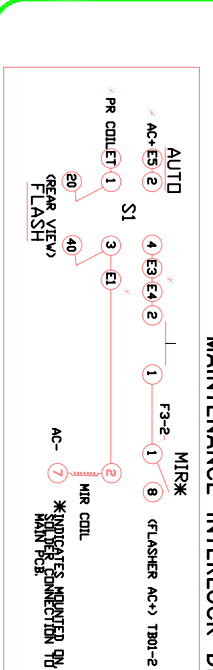
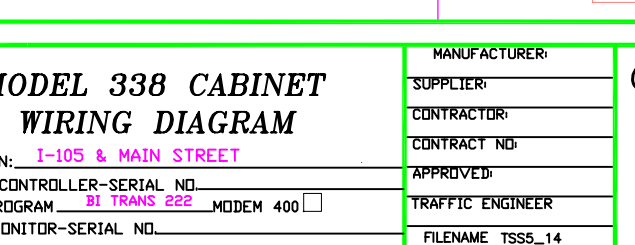
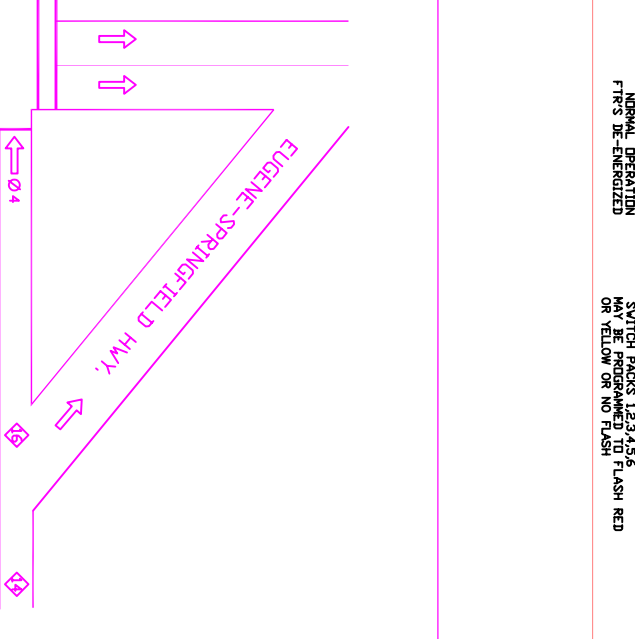
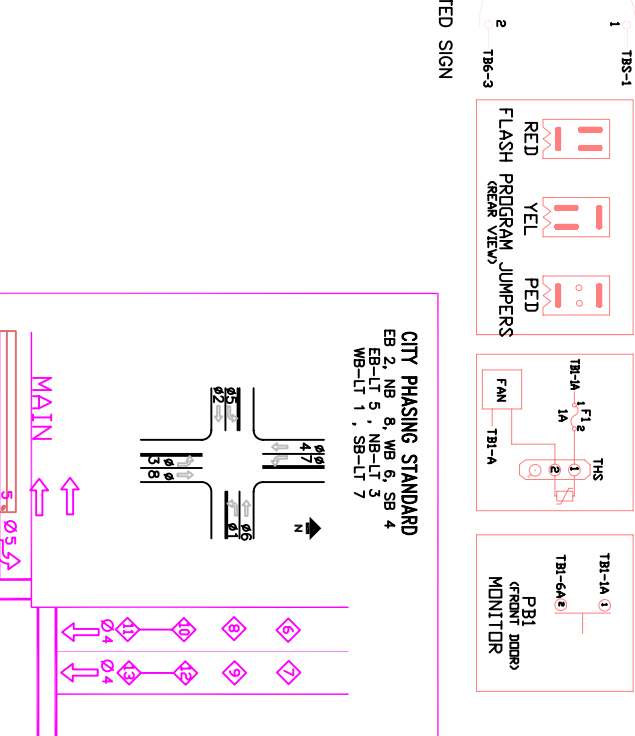
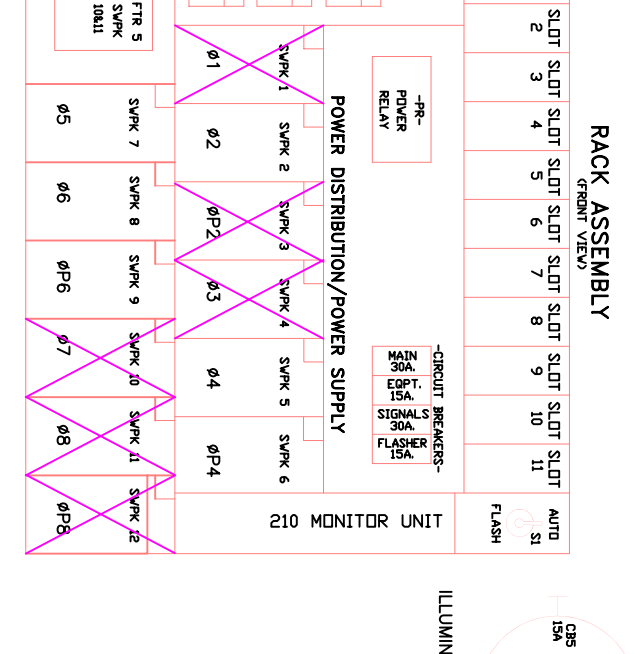
BI TRANS 222

PN	SOURCE	FUNCTION	CONN. TO	PN	SOURCE	FUNCTION	CONN. TO
1	DC - GND LOGIC	GRND	C4-2	53	12 - 7	SF 2 (ADV EN)	FR9-SP
2	01 - 1	4P DINT WALK	C4-10	54	12 - 8	SF DT 5 (OL 2)	FR8-F
3	01 - 2	4P WALK	C4-12	55	13 - 1	5 ECT	FR8-F
4	01 - 3	4 RED	C4-19	56	13 - 2	1 ECT	FR8-F
5	01 - 4	4 YELLOW	C4-20	57	13 - 3	7 ECT	FR8-F
6	01 - 5	4 GREEN	C4-21	58	13 - 4	3 ECT	FR8-F
7	01 - 6	3 RED	C4-22	59	13 - 5	SY DT 3 (OS 3)	FR7-F
8	01 - 7	3 YELLOW	C4-23	60	13 - 6	SY DT 1 (OS 1)	FR6-F
9	01 - 8	3 GREEN	C4-24	61	13 - 7	SY DT 4 (R/FR)	FR7-W
10	02 - 1	2P DINT WALK	C4-18	62	13 - 8	SY DT 2 (OS 2)	FR8-W
11	02 - 2	2P WALK	C4-16	63	14 - 5	2 ECT	NC
12	02 - 3	2 YELLOW	C4-13	64	14 - 6	4 ECT	NC
13	02 - 4	2 RED	C4-14	65	14 - 7	4 ECT	NC
14	DC - GND LOGIC	GRND	C4-15	66	15 - 1	2 PED PB	FR10-F
15	02 - 5	2 GREEN	C4-7	67	15 - 2	6 PED PB	FR9-W
16	02 - 6	1 RED	C4-8	68	15 - 3	4 PED PB	FR10-W
17	02 - 7	1 YELLOW	C4-9	69	15 - 4	8 PED PB	FR7-SP
18	02 - 8	1 GREEN	NC	70	15 - 5	EVA PREEMPT	FR8-SP
19	03 - 1	8P DINT WALK	NC	71	15 - 6	EVA PREEMPT	FR8-SP
20	03 - 2	8P WALK	NC	72	15 - 7	EVA PREEMPT	FR8-SP
21	03 - 3	8 RED	NC	73	15 - 8	EVD PREEMPT	FR8-SP
22	03 - 4	8 YELLOW	NC	74	15 - 9	EVD PREEMPT	FR8-SP
23	03 - 5	8 GREEN	NC	75	16 - 1	SD 6 (OL 3 INT)	FR8-W
24	03 - 6	7 RED	NC	76	16 - 2	2 ECT	NC
25	03 - 7	7 YELLOW	NC	77	16 - 3	4 ECT	NC
26	03 - 8	7 GREEN	NC	78	16 - 4	6 EXT	NC
27	04 - 1	6P DINT WALK	NC	79	16 - 5	8 EXT	FR9-SP
28	04 - 2	6P WALK	NC	80	16 - 6	5P FN 1 (ADV)	FR8-SP
29	04 - 3	6 RED	NC	81	16 - 7	FLASH SENSE	C4-4
30	04 - 4	6 YELLOW	NC	82	16 - 8	STOP TIME	C4-5
31	04 - 5	6 GREEN	NC	83	06 - 1	RESERVED	NC
32	04 - 6	5 RED	NC	84	06 - 2	RESERVED	NC
33	04 - 7	5 YELLOW	NC	85	06 - 3	OL D RED (FR/FL)	NC
34	04 - 8	5 GREEN	NC	86	06 - 4	OL D YEL (FR/FL)	NC
35	05 - 1	TDD OUT 1 (QA 6)	C4-17	87	06 - 5	OL D GRN (FR/FL)	NC
36	05 - 2	SP FN 1 (QB 6)	C4-11	88	06 - 6	OL C RED (FR/FL)	NC
37	05 - 3	TDD OUT 2 (QA 7)	C4-11	89	06 - 7	OL C YEL (FR/FL)	NC
38	05 - 4	2 ECT	NC	90	06 - 8	OL C GRN (FR/FL)	NC
39	11 - 1	2 ECT	NC	91	07 - 1	RESERVED	NC
40	11 - 2	2 ECT	NC	92	DC - GND LOGIC	GRND	C4-3
41	11 - 3	2 ECT	NC	93	07 - 2	RESERVED	NC
42	11 - 4	2 ECT	NC	94	07 - 3	OL B RED	NC
43	11 - 5	2 ECT	NC	95	07 - 4	OL B YEL	NC
44	11 - 6	2 ECT	NC	96	07 - 5	OL B GRN	NC
45	11 - 7	4 ECT	NC	97	07 - 6	OL A RED	NC
46	11 - 8	4 ECT	NC	98	07 - 7	OL A YEL	NC
47	12 - 1	SWT 1 (Q 0 0)	IF5-F	99	07 - 8	OL A GRN	NC
48	12 - 2	6 CALL DET	IF5-F	100	05 - 5	RESERVED	NC
49	12 - 3	SWT 8 (4 0 0)	IF5-W	101	05 - 6	QAB FLASH OUT	C4-1
50	12 - 4	8 CALL DET	IF5-F	102	05 - 7	DECT RESET	FR15-3
51	12 - 5	DOOR OPEN (FREE)	IF9-F	103	05 - 8	WATCHDOG	C4-6
52	12 - 6	RAILROAD	IF9-W	104	DC - GND LOGIC	GRND	IF15-4



### 210 MONITOR CHANNEL ASSIGNMENTS

PN	CHANNEL	CONN. TO	PN
1	1 GRN	SWPK 1 GRN	1
2	2 GRN	SWPK 2 GRN	2
3	3 YEL	SWPK 3 YEL	3
4	4 YEL	SWPK 4 YEL	4
5	5 GRN	SWPK 5 GRN	5
6	6 YEL	SWPK 6 YEL	6
7	7 YEL	SWPK 7 YEL	7
8	8 GRN	SWPK 8 GRN	8
9	9 GRN	SWPK 9 GRN	9
10	10 GRN	SWPK 10 GRN	10
11	11 GRN	SWPK 11 GRN	11
12	12 YEL	SWPK 12 GRN	12
13	13 GRN	N/U	13
14	14 GRN	N/U	14
15	15 GRN	N/U	15
16	16 YEL	SWPK 12 YEL	16



**MODEL 338 CABINET WIRING DIAGRAM**

INTERSECTION: **I-105 & MAIN STREET**

MODEL 170 CONTROLLER-SERIAL NO. \_\_\_\_\_

CONTROL PROGRAM **BI TRANS 222** MODEM 400

CONFLICT MONITOR-SERIAL NO. \_\_\_\_\_

MANUFACTURER: \_\_\_\_\_

SUPPLIER: \_\_\_\_\_

CONTRACTOR: \_\_\_\_\_

CONTRACT NO: \_\_\_\_\_

APPROVED: \_\_\_\_\_

TRAFFIC ENGINEER: \_\_\_\_\_

FILENAME: TSS5\_14

**CITY OF SPRINGFIELD**

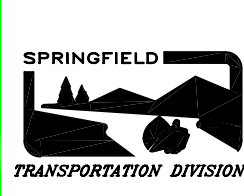
**DEPT. OF PUBLIC WORKS**

**TRANSPORTATION DIVISION**

225 FIFTH STREET

SPRINGFIELD, OR. 97477

(541) 726-3753



NO	REVISION	DATE	BY	APPR.