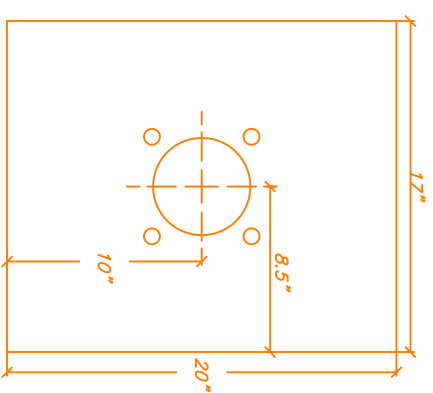
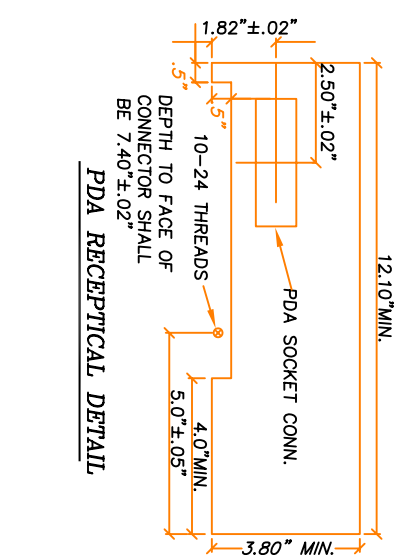
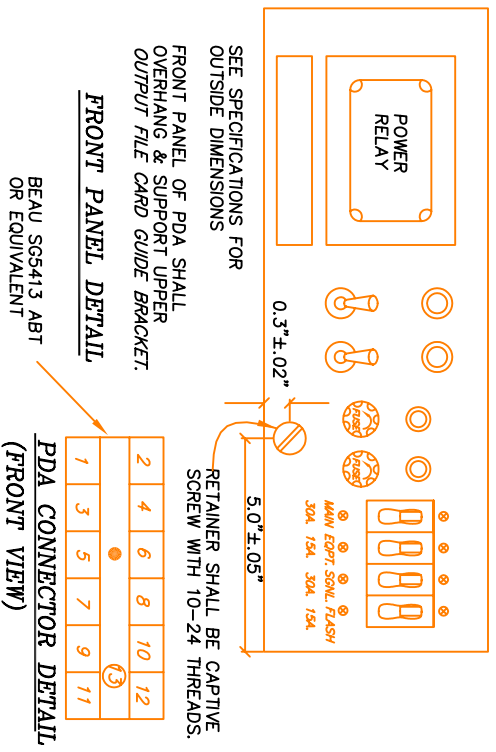
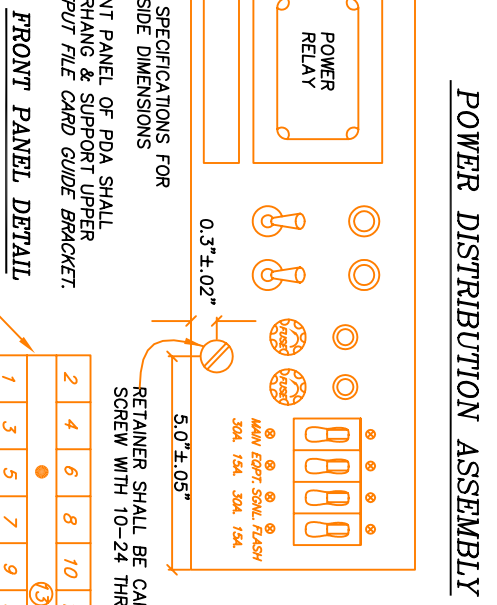


CABINET SHALL BE EQUIPPED WITH RAILS FOR MOUNTING EQUIPMENT. RAILS SHALL BE OF STANDARD 19 IN. RACK CONFIGURATION.
 CABINET DOORS SHALL BE SECURED BY A 3-POINT LATCH MECHANISM.
 LATCH HANDLE SHALL BE EQUIPPED WITH HASP FOR ADDITION OF PADLOCK.



LEGEND:
 FTR = TRANSFER RELAY
 FLR = FLASH RELAY
 PR = POWER RELAY
 SWPK = SWITCHPACK
 FL = FLASHER
 PR = MONITOR UNIT
 IR = ISOLATION RELAY
 LR = LOGIC RELAY
 FR = REM. FLASH RELAY
 MIR = MAINTENANCE INTERLOCK RELAY



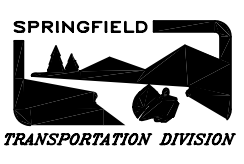
PDA CONNECTOR PIN ASSIGNMENTS

POSITION	PLUG	SOCKET
1	AC+MAIN CB (PRI)	AC+SERVICE (VA F2)
2	AC+SIGNAL CB(SEC)	AC+SWPK BUS
3	VA PWR RELAY NC	
4	AC+EQUIP CB (SEC)	TB01-4
5	AC+MAIN CB (SEC)	TB01-3
6	POWER RELAY COIL	LR-FR, MU, A, F, SW
7	AC+FLASHER CB (SEC)	TB01-2
8	AC+PWR SUPP PER COIL	TB01-5
9	AC+PWR SUPP PER COIL	TB02-1, LR-FR, MU, SWPKS
10	124 VDC PWR SUPP OUT	TB02-2, MU, F, C4 CONN.
11	DCG	C4 CONN.
12	STOP TIME	TB01-7
13	E.O. GROUND	

CITY OF SPRINGFIELD
 DEPT. OF PUBLIC WORKS
 TRANSPORTATION DIVISION
 225 FIFTH STREET
 SPRINGFIELD, OR. 97477
 (541) 726-3753

BY	DATE	NO	REVISION	DATE	BY	APPR.
DRB	10/93	1	FORM. EUGENE TSS-13	12/93	DRB	
		2	SPRINGFIELD DWG. 5-14			
		3	STD. DWG. UPDATE	6/01	D.B.	B.B.

FILENAME: TSD5_14



MODEL 337
 CABINET DETAILS