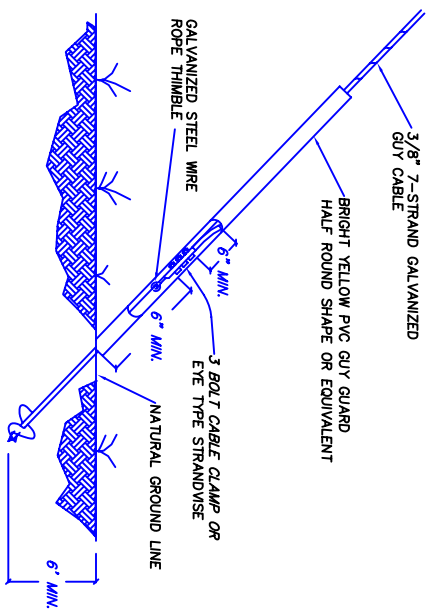
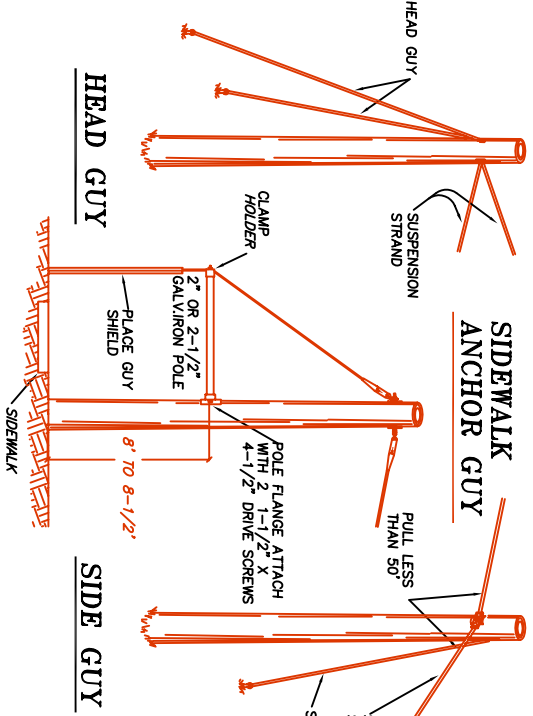


**MINIMUM CLEARANCE TO TELEPHONE CABLE**



**GUY ANCHOR ASSEMBLY**



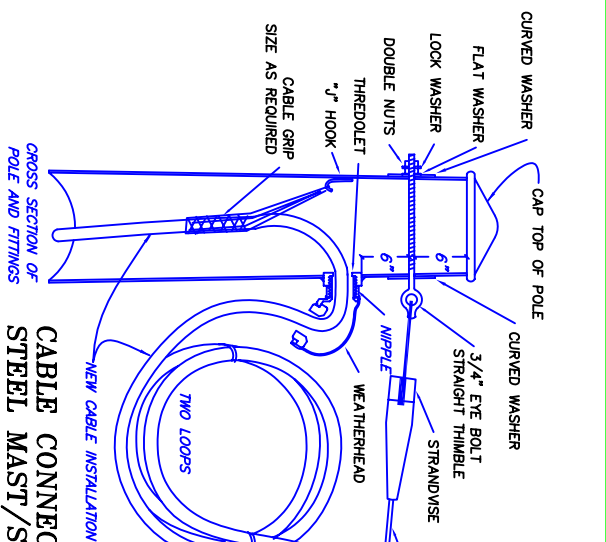
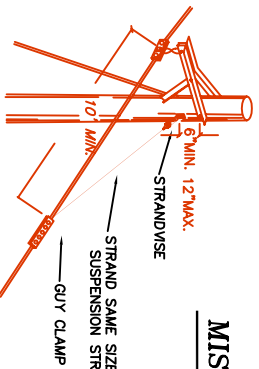
**HEAD GUY**

**SIDEWALK ANCHOR GUY**

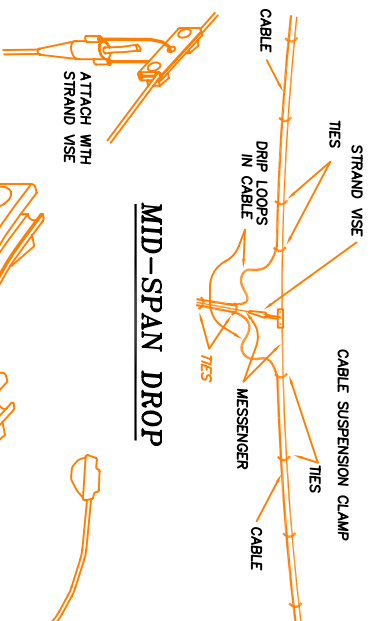
**SIDE GUY**

MAINTAIN THE FOLLOWING CLEARANCES:  
 40' POLE W/PRIMARY - 11'-4" FROM PRIMARY  
 45' AND GREATER W/PRIMARY - 15'-4" FROM PRIMARY  
 SECONDARY POLE - 40" FROM SECONDARY  
 WHERE POSSIBLE, KEEP TRAFFIC CONTROL, INTERCONNECT  
 CABLE ON SAME SIDE OF THE POLE THAT TV OR  
 TELEPHONE CABLE IS ON.

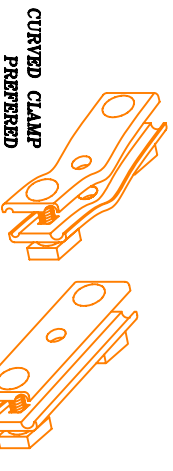
**FALSE DEAD-END AT CABLE EXTENSION ARM**



**CABLE CONNECTION DETAIL STEEL MAST/STRAIN POLE**

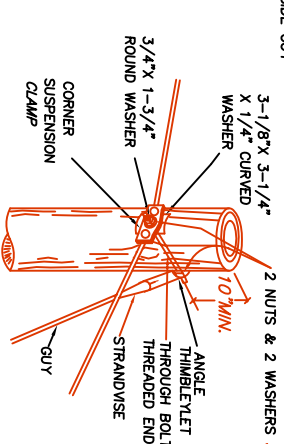


**MID-SPAN DROP**



**CURVED CLAMP PREFERRED**

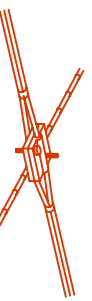
**CABLE SUSPENSION CLAMPS**



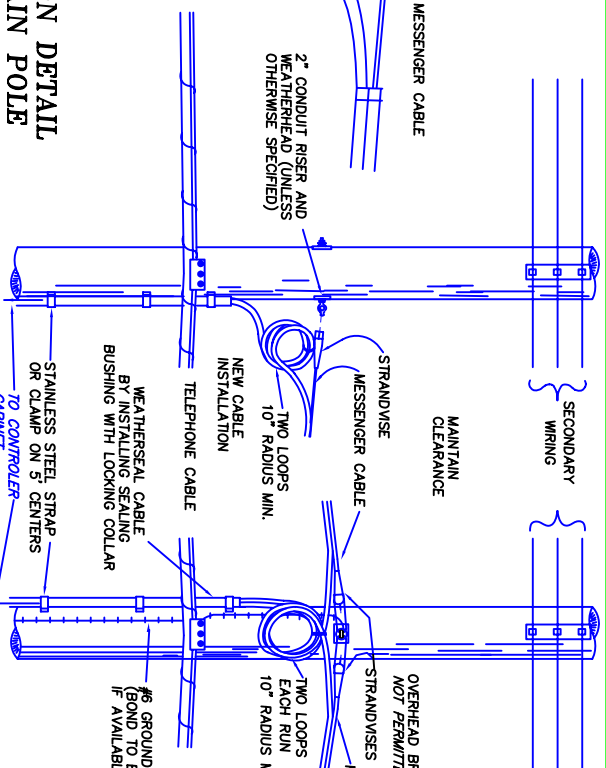
**SUSPENSION STRAND**

**STRAIGHT THIMBLE EYE BOLT**

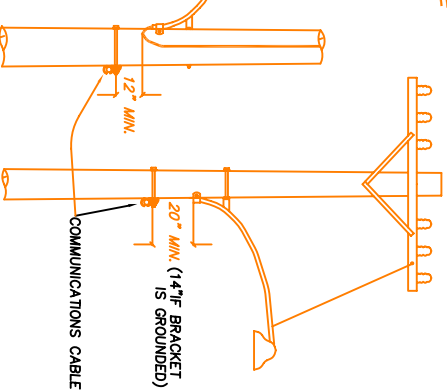
**MISCELLANEOUS POLE HARDWARE**



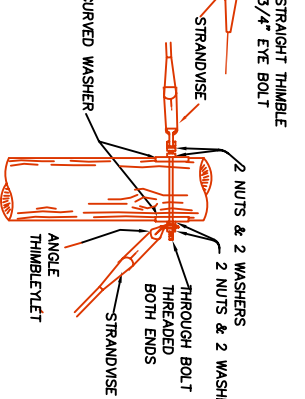
**CROSSOVER CLAMP**



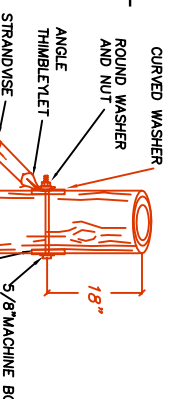
**CABLE/RISER DETAIL WOOD UTILITY POLE**



**STREET LIGHT TO CABLE CLEARANCES**



**ANGLED THIMBLELET & THROUGH BOLT**

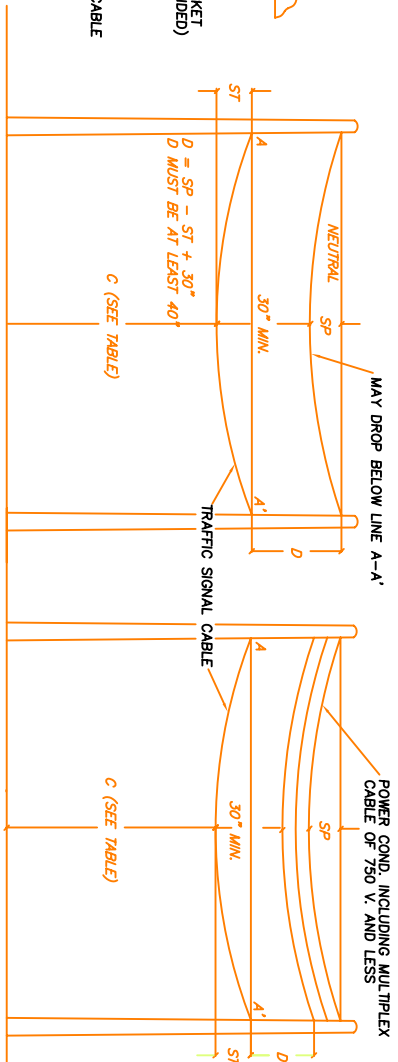


**ANGLED THIMBLE EYELET**

NOTE: DRAWING NOT TO SCALE  
 ALL EYEBOLTS, BOLTS, NUTS AND WASHERS SHALL BE GALV. STEEL UNLESS NOTED OTHERWISE. ALL SET SCREWS SHALL BE MIN. DIA. 1/4" STAINLESS STEEL WITH SQUARE OR HEX HEADS. ALL SPANWIRE HANGERS AND FLUMBLIZERS SHALL BE CAST BRONZE.

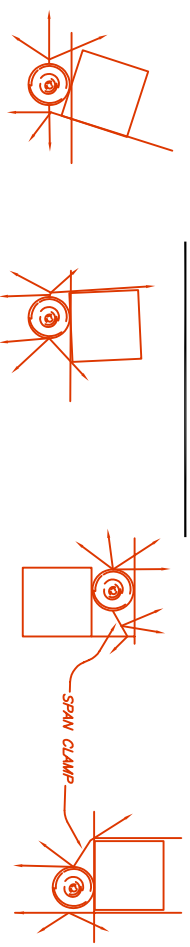
DIMENSION A	
40" 0-8700 VOLTS TRANSFORMER (NON-GROUNDED)	
30" 0-8700 VOLTS TRANSFORMER (GROUNDED)	
DIMENSION B	
60" 8700-50,000 VOLTS TRANSFORMER (GROUNDED)	
40" 0-8700 VOLTS POWER CIRCUITS	

**TRANSFORMER, REGULATOR OR CAPACITOR CLEARANCE**



POWER CONDUCTORS OF 750 V. OR LESS	
DIMENSION C (10' MINIMUM)	
CROSSINGS ABOVE	CLEARANCES
PUBLIC ROADS	18'
PUBLIC ALLEYS	15'
RESIDENTIAL DRIVES	15'
RAILROAD TRACKS	26'

**SPAN CLEARANCE**



**CLIMBING SPACE**

AN UNOBSTRUCTED VERTICAL CLIMBING SPACE CONSISTING OF AN IMAGINARY 30" SQUARE BOX EXTENDING AT LEAST 40" ABOVE AND BELOW THE HIGHEST CABLE FACILITY SHALL BE PROVIDED. TRAFFIC CONTROL, RISER, AND INTERCONNECT TERMINAL BOX SHALL NOT BE LOCATED WITHIN THE CLIMBING SPACE. TECHNIQUES FOR MAINTAINING THE CLIMBING SPACE WHERE DROP WIRES ARE INVOLVED IS SHOWN ABOVE.

CITY OF SPRINGFIELD  
 DEPT. OF PUBLIC WORKS  
 TRANSPORTATION DIVISION  
 225 FIFTH STREET  
 SPRINGFIELD, OR. 97477  
 (541) 726-3753



**SPAN CLEARANCES AND ATTACHMENTS**

STANDARD DRAWING  
 5-10

NO	REVISION	DATE	BY	APPR.
1	MID-SPAN DROP	2/92	J.B.	J.E.
2	SPRINGFIELD DWG. 5-10	3/93	D.B.	S.M.
3	STD. DWG. UPDATE	6/01	D.B.	B.B.

BY DATE  
 J.BRULLE 6/90  
 DESIGNED:  
 CHECKED:  
 APPROVED:  
 FILENAME: TSD5\_10