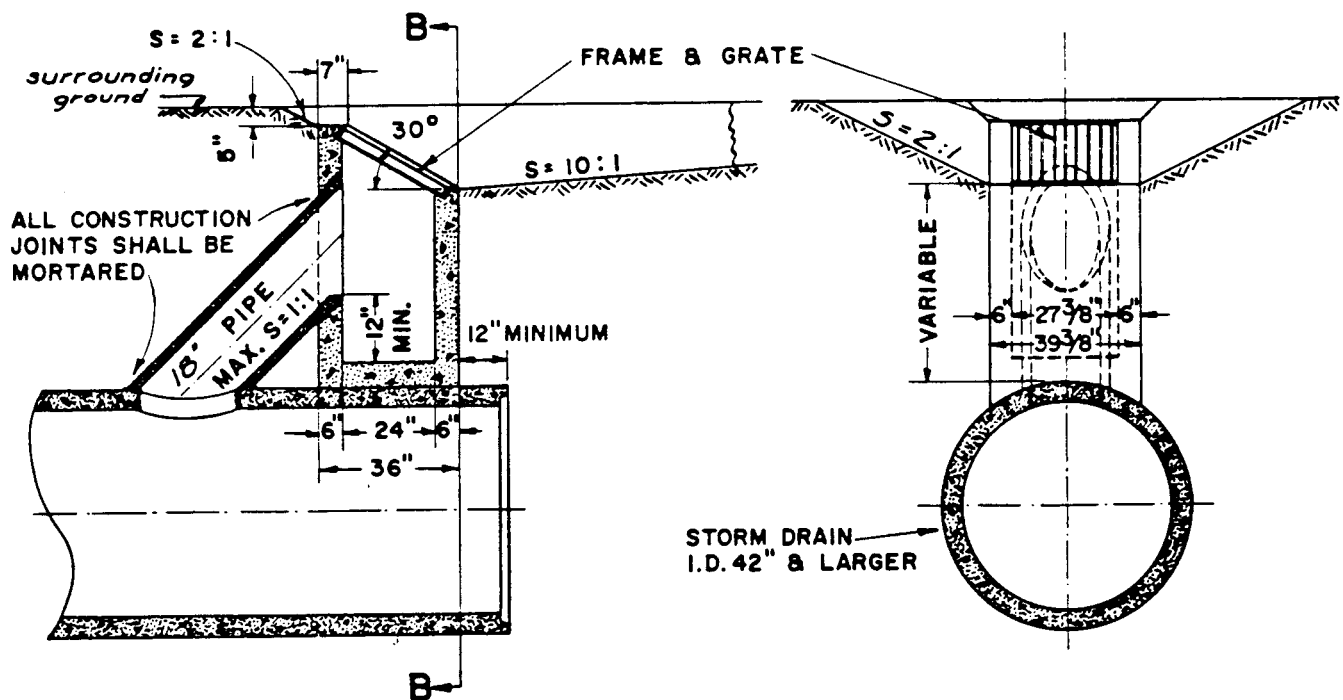


SECTION A-A

SECTION B-B



NOTE: CONCRETE INLET TYPE - D, MODIFIED, ALSO FRAME & GRATE SAME AS SPECIFIED ON OREGON STATE HIGHWAY DEPARTMENT DRAWINGS

NO	REVISION	DATE	BY	APPR.

CITY OF SPRINGFIELD  
DEPT. OF PUBLIC WORKS

225 FIFTH STREET  
SPRINGFIELD, OR. 97477

ODOT - TYPE D MODIFIED  
AREA CATCH BASIN

STANDARD  
DRAWING

4-14