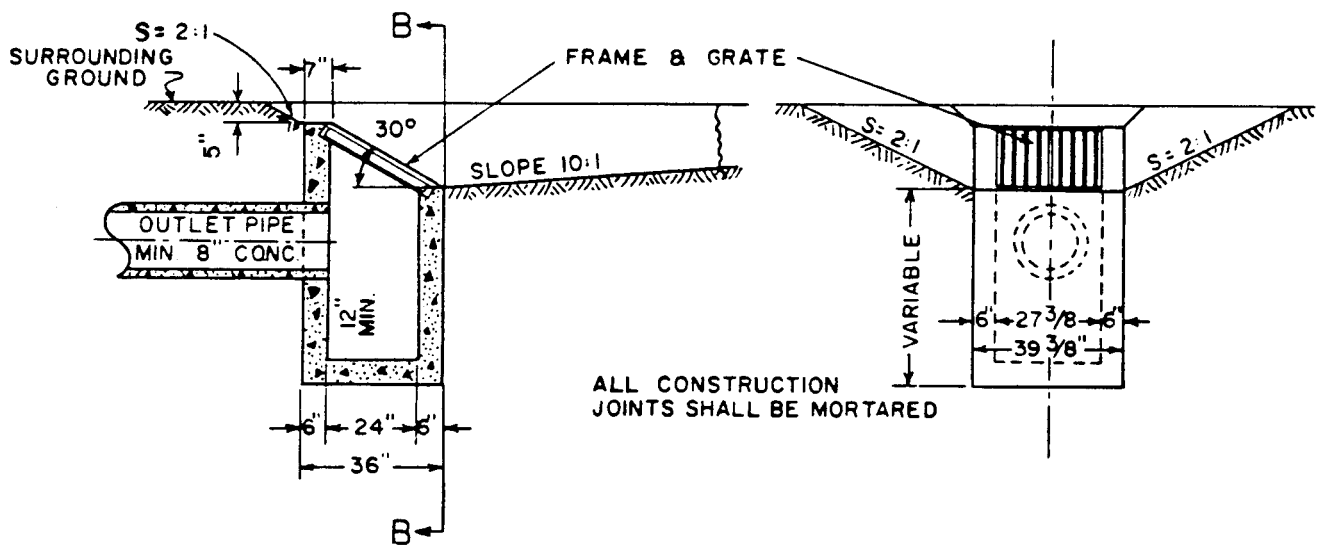


SECTION A-A

SECTION B-B



NOTE: CONCRETE INLET TYPE-D, ALSO FRAME & GRATE
SAME AS SPECIFIED ON OREGON STATE HIGHWAY DEPARTMENT
DRAWINGS

NO	REVISION	DATE	BY	APPR.

CITY OF SPRINGFIELD
DEPT. OF PUBLIC WORKS

225 FIFTH STREET
SPRINGFIELD, OR. 97477

ODOT - TYPE D
AREA CATCH BASIN

STANDARD
DRAWING

4-13