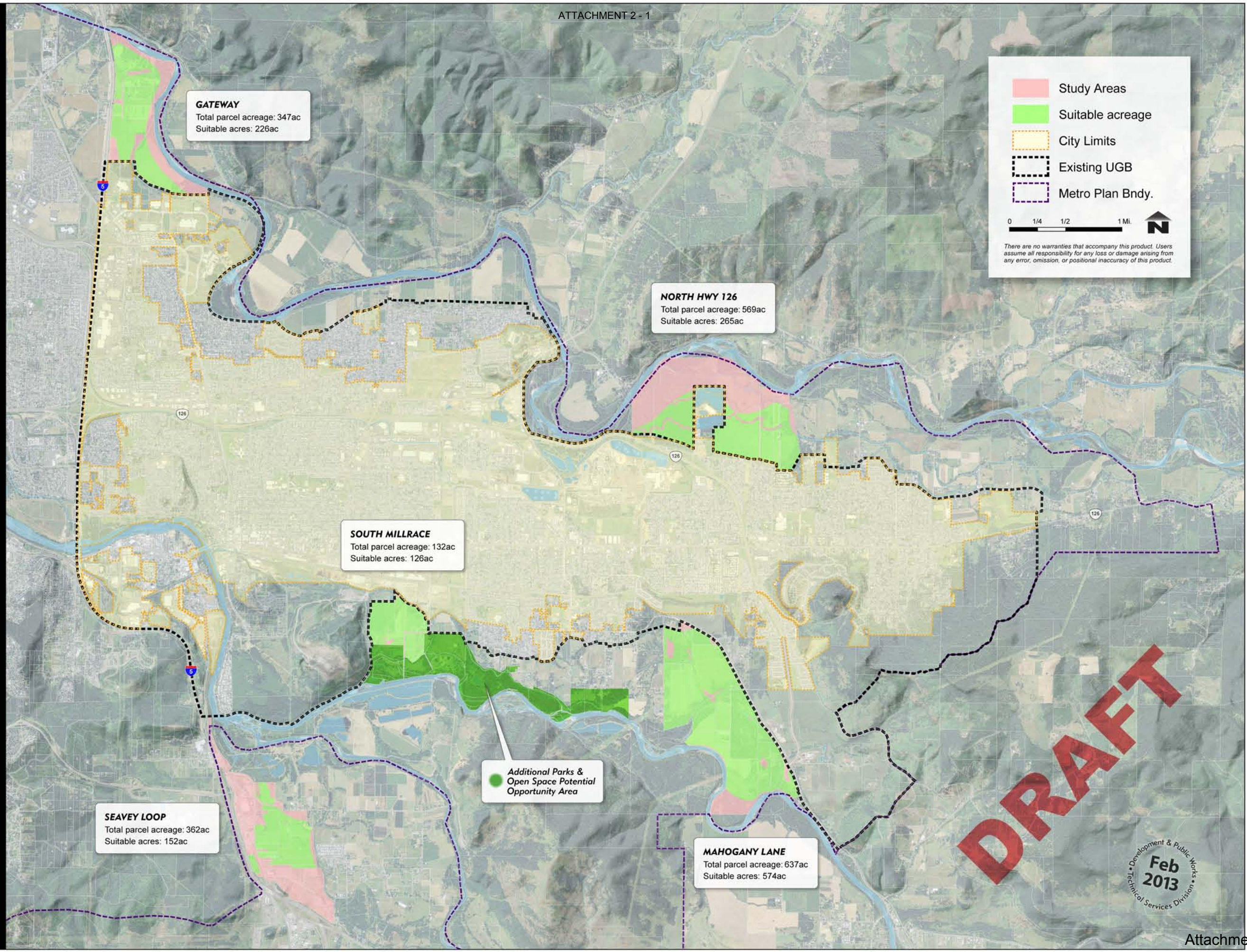




SPRINGFIELD 2030 REFINEMENT PLAN: Potential UGB Expansion Areas



**GATEWAY**  
Total parcel acreage: 347ac  
Suitable acres: 226ac

**NORTH HWY 126**  
Total parcel acreage: 569ac  
Suitable acres: 265ac

**SOUTH MILLRACE**  
Total parcel acreage: 132ac  
Suitable acres: 126ac

**SEAVEY LOOP**  
Total parcel acreage: 362ac  
Suitable acres: 152ac

Additional Parks &  
Open Space Potential  
Opportunity Area

**MAHOGANY LANE**  
Total parcel acreage: 637ac  
Suitable acres: 574ac

Study Areas  
 Suitable acreage  
 City Limits  
 Existing UGB  
 Metro Plan Bndy.

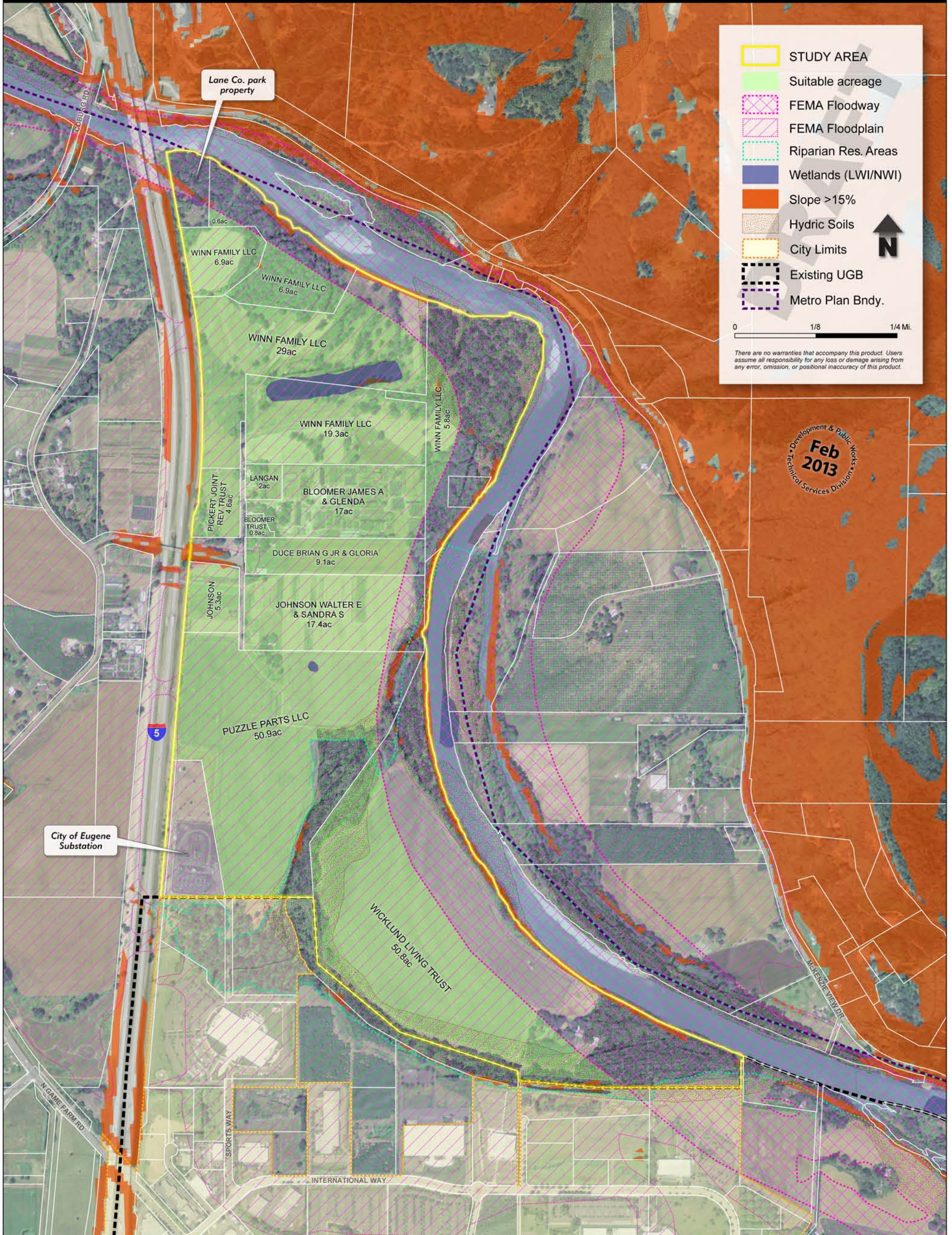
0 1/4 1/2 1 Mi.

There are no warranties that accompany this product. Users assume all responsibility for any loss or damage arising from any error, omission, or positional inaccuracy of this product.

**DRAFT**

Development & Public Works  
Feb 2013  
Technical Services Division

# SPRINGFIELD 2030 REFINEMENT PLAN: Potential UGB Expansion Areas - North Gateway



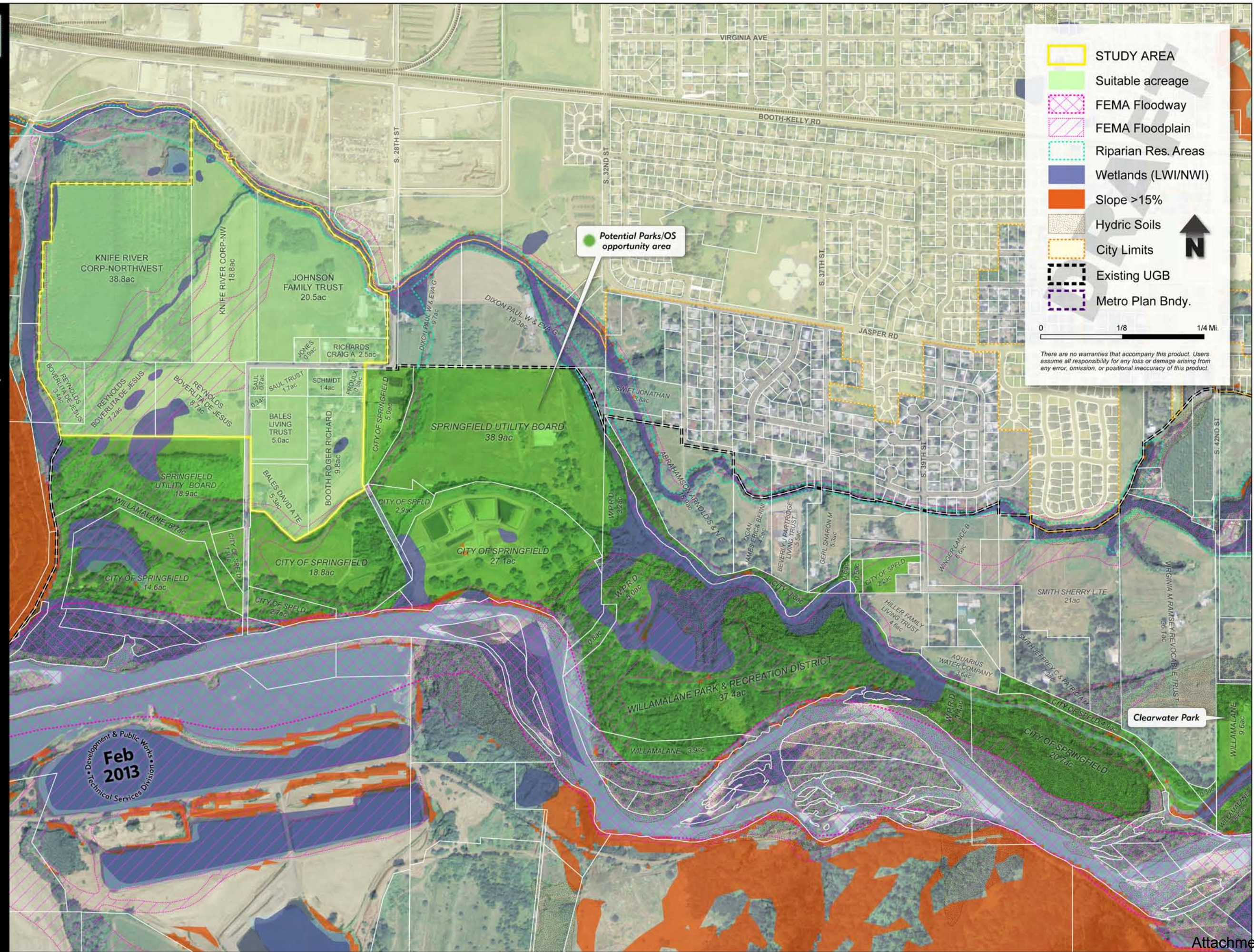
Development & Public Works  
**Feb 2013**  
 Technical Services Division

- STUDY AREA
- Suitable acreage
- FEMA Floodway
- FEMA Floodplain
- Riparian Res. Areas
- Wetlands (LWI/NWI)
- Slope >15%
- Hydric Soils
- City Limits
- Existing UGB
- Metro Plan Bndy.

0 1/8 1/4 Mi.

There are no warranties that accompany this product. Users assume all responsibility for any loss or damage arising from any error, omission, or positional inaccuracy of this product.

**SPRINGFIELD 2030 REFINEMENT PLAN: Potential UGB Expansion Areas - South Millrace**



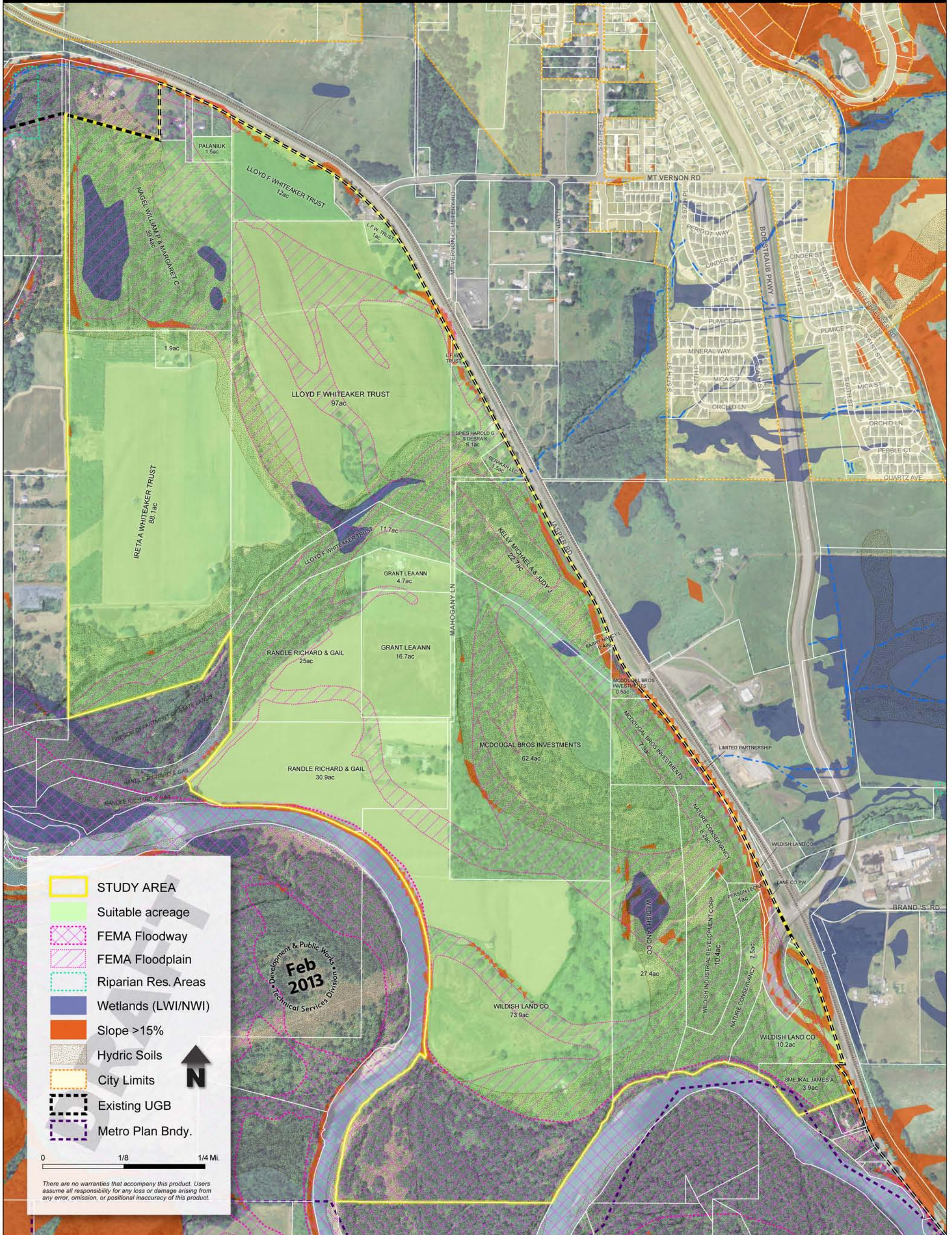
- STUDY AREA
- Suitable acreage
- FEMA Floodway
- FEMA Floodplain
- Riparian Res. Areas
- Wetlands (LWI/NWI)
- Slope >15%
- Hydric Soils
- City Limits
- Existing UGB
- Metro Plan Bndy.

0 1/8 1/4 Mi.

There are no warranties that accompany this product. Users assume all responsibility for any loss or damage arising from any error, omission, or positional inaccuracy of this product.

Feb 2013  
Development & Public Works  
Technical Services Division

# SPRINGFIELD 2030 REFINEMENT PLAN: Potential UGB Expansion Areas - Mahogany Lane

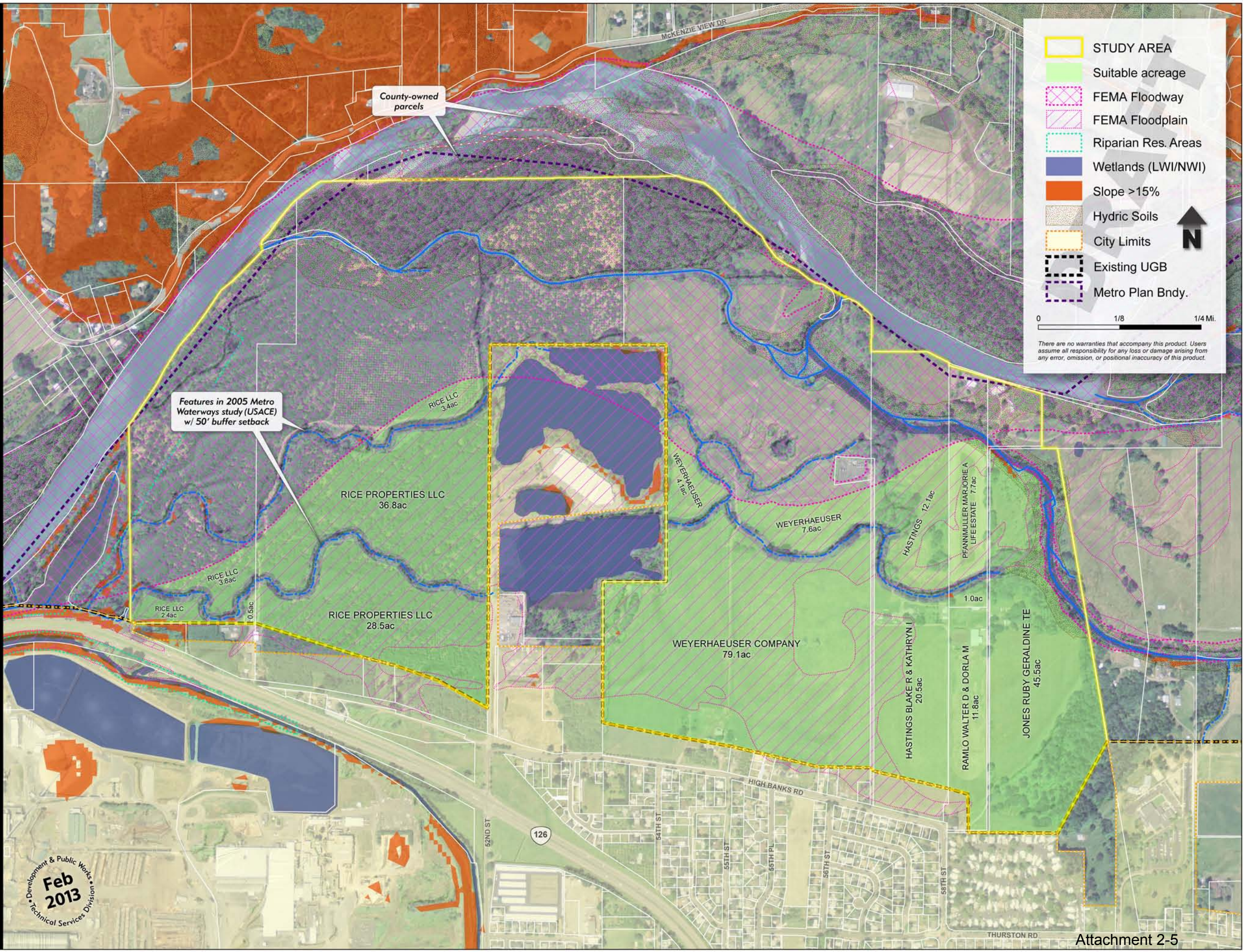


- STUDY AREA
- Suitable acreage
- FEMA Floodway
- FEMA Floodplain
- Riparian Res. Areas
- Wetlands (LWI/NWI)
- Slope >15%
- Hydric Soils
- City Limits
- Existing UGB
- Metro Plan Bndy.

0 1/8 1/4 Mi.

There are no warranties that accompany this product. Users assume all responsibility for any loss or damage arising from any error, omission, or positional inaccuracy of this product.

**SPRINGFIELD 2030 REFINEMENT PLAN: Potential UGB Expansion Areas - North Hwy 126**



- STUDY AREA
- Suitable acreage
- FEMA Floodway
- FEMA Floodplain
- Riparian Res. Areas
- Wetlands (LWI/NWI)
- Slope >15%
- Hydric Soils
- City Limits
- Existing UGB
- Metro Plan Bndy.

0 1/8 1/4 Mi.

There are no warranties that accompany this product. Users assume all responsibility for any loss or damage arising from any error, omission, or positional inaccuracy of this product.

Features in 2005 Metro Waterways study (USACE) w/ 50' buffer setback

County-owned parcels

RICE LLC 3.4ac

RICE LLC 3.8ac

RICE LLC 2.4ac

RICE LLC 0.5ac

RICE PROPERTIES LLC 36.8ac

RICE PROPERTIES LLC 28.5ac

WEYERHAEUSER 4.7ac

WEYERHAEUSER 7.6ac

WEYERHAEUSER COMPANY 79.1ac

HASTINGS 12.1ac

PfANNMULLER MARJORIE A LIFE ESTATE 7.7ac

1.0ac

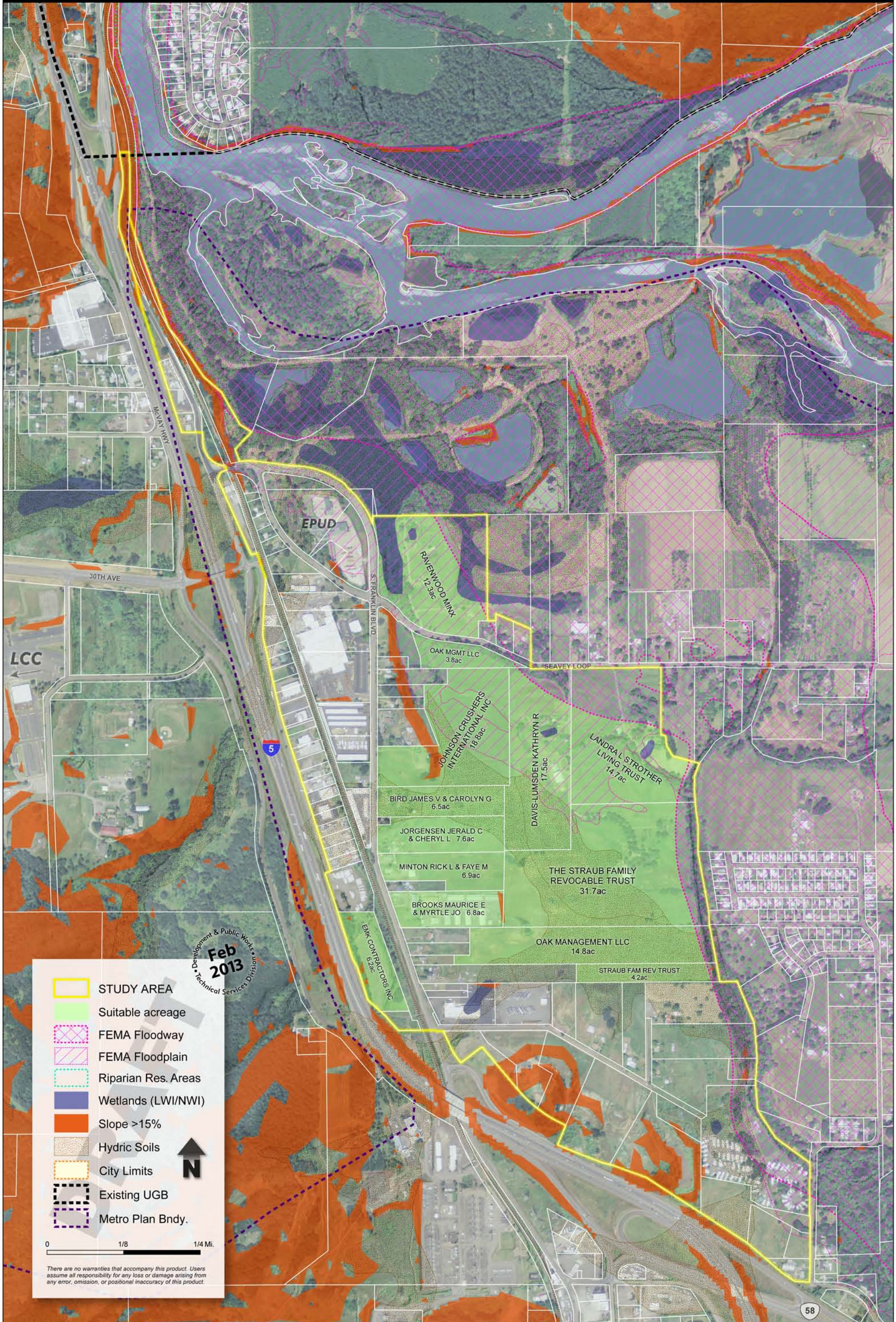
HASTINGS BLAKE R & KATHRYN I 20.5ac

RAMLO WALTER D & DORLA M 11.8ac

JONES RUBY GERALDINE TE 45.5ac

Development & Public Works  
**Feb 2013**  
 Technical Services Division

# SPRINGFIELD 2030 REFINEMENT PLAN: Potential UGB Expansion Areas - Seavey Loop



EPUD

RAVENWOOD MIX  
12.3ac

OAK MGMT LLC  
3.8ac

JOHNSON CRUSHERS  
INTERNATIONAL INC  
18.8ac

BIRD JAMES V & CAROLYN G  
6.5ac

JORGENSEN JERALD C  
& CHERYL L 7.6ac

MINTON RICK L & FAYE M  
6.9ac

BROOKS MAURICE E  
& MYRTLE JO 6.8ac

EMK CONTRACTORS INC  
6.2ac

DAVIS-LUMSDEN KATHRYN R  
17.5ac

LANDRA L STROTHER  
LIVING TRUST  
14.7ac

THE STRAUB FAMILY  
REVOCABLE TRUST  
31.7ac

OAK MANAGEMENT LLC  
14.8ac

STRAUB FAM REV TRUST  
4.2ac

LCC

30TH AVE

W. AVA HWY

S. FRANKLIN BLVD

SEAVEY LOOP

5

58

Feb 2013  
Development & Public Works Division  
Technical Services

- STUDY AREA
- Suitable acreage
- FEMA Floodway
- FEMA Floodplain
- Riparian Res. Areas
- Wetlands (LWI/NWI)
- Slope >15%
- Hydric Soils
- City Limits
- Existing UGB
- Metro Plan Bndy.



0 1/8 1/4 Mi.

There are no warranties that accompany this product. Users assume all responsibility for any loss or damage arising from any error, omission, or positional inaccuracy of this product.