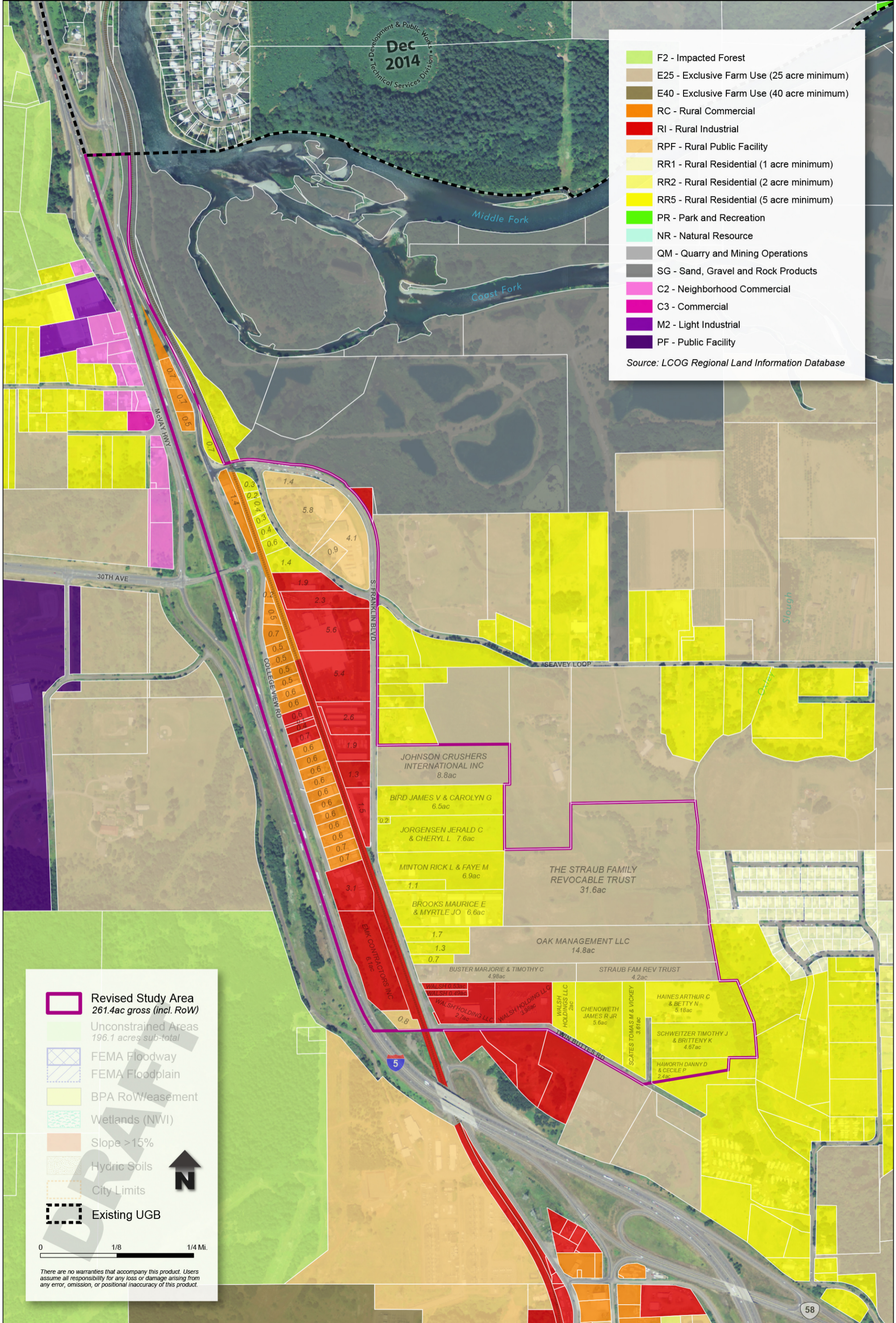


# College View - Seavey Loop Area: EXISTING LANE COUNTY ZONING

Dec 2014  
Development & Public Works  
Technical Services Division

- F2 - Impacted Forest
  - E25 - Exclusive Farm Use (25 acre minimum)
  - E40 - Exclusive Farm Use (40 acre minimum)
  - RC - Rural Commercial
  - RI - Rural Industrial
  - RPF - Rural Public Facility
  - RR1 - Rural Residential (1 acre minimum)
  - RR2 - Rural Residential (2 acre minimum)
  - RR5 - Rural Residential (5 acre minimum)
  - PR - Park and Recreation
  - NR - Natural Resource
  - QM - Quarry and Mining Operations
  - SG - Sand, Gravel and Rock Products
  - C2 - Neighborhood Commercial
  - C3 - Commercial
  - M2 - Light Industrial
  - PF - Public Facility
- Source: LCOG Regional Land Information Database



- Revised Study Area  
261.4ac gross (incl. RoW)
- Unconstrained Areas  
196.1 acres sub-total
- FEMA Floodway
- FEMA Floodplain
- BPA RoW/easement
- Wetlands (NWI)
- Slope >15%
- Hydric Soils
- City Limits
- Existing UGB

0 1/8 1/4 Mi.

*There are no warranties that accompany this product. Users assume all responsibility for any loss or damage arising from any error, omission, or positional inaccuracy of this product.*